



THE BEMAN AT RIVERS EDGE	
3 Bedrooms and 2 1/2 Baths	
Total Climate Controlled	1,998 sq. ft.
Covered Porches	440 sq. ft.
Garage	740 sq. ft.
Total Living Area	3,178 sq. ft.



## THE BEMAN

The Beman home is creatively designed and elevated to capture and maximize the beautiful golf and river views at Rivers Edge. Architecturally, this home is well-balanced and crafted with classic columns on its broad sweeping front porch, matching dormers, and carriage-style garage doors. Designed with a fabulous view in mind, the main living area is located on the second level of the home, perfect for taking in the captivating sights of wildlife, tidal river, salt marsh, and scenic golf holes. Guest quarters, a workshop, and plenty of storage space make the downstairs level fully functional. Enjoy the thoughtful design of the Beman, a creative style for Rivers Edge.

The Signature Series starts with our plan, but becomes your home design. These homes offer extraordinary value, quality construction and the detail that all Mark Saunders Luxury Homes are known for. All designs and floor plans in the series have been pre-approved for construction in Rivers Edge and offer a substantial list of custom possibilities to assist you in creating your dream home. The Signature Series is superior craftsmanship, lasting value, architectural innovation, beautiful designs and attention to detail in your home at an affordable price.

2000 Arnold Palmer Drive, Shallotte, NC 28470  
800.789.0535 • realestate@riversedge-nc.com



Artistic illustration of the front elevation and floor plan are conceptual and subject to change. Dimensions and square footage calculations are taken from the construction plan blueprints. Any unauthorized use or duplication of The Beman 1p-1998 is a violation of copyright law. Copyright © 2010 Mark Saunders Luxury Homes®.

DESIGN FEATURES FOR THE BEMAN OF THE SIGNATURE SERIES  
AT RIVERS EDGE GOLF CLUB & PLANTATION®

OWNER'S RETREAT

- Spacious walk-in closets for abundant wardrobe storage
- Comfort height water closet
- Shower with ceramic tile walls and glass door enclosure
- Cultured marble double bowl vanity with mirror
- Moen® "Eva" or "Brantford" chrome faucets

GOURMET KITCHEN

- Cooking and entertainment island
- Granite countertops with under-mount stainless steel double sink
- Cabinetry with raised wood panel doors and crown molding (maple)
- Superior GE® Stainless Steel appliances with self-cleaning range, 25.3 cu ft refrigerator, garbage disposal, microwave, and dishwasher
- "Camerist" Moen® chrome faucet

INTERIOR FEATURES

- Professional interior design coordinator
- Classic trim details including oversized baseboards throughout, large window and door casings, and decorative crown molding in the great room, foyer, dining room, kitchen, powder room, and bedrooms
- Smooth finish 9' ceilings
- Sherwin Williams® paint
- "Plymouth" Schlage® door hardware in brushed chrome

- Hardwood flooring in great room, dining room, breakfast room, gourmet kitchen, foyer, and powder room
- Ceramic tile flooring in baths and laundry room
- Plush Mohawk® carpeting in remaining areas of residence
- Cozy fireplace including gas logs, wooden mantle, slate hearth, and built-in cabinetry

ARCHITECTURAL AND EXTERIOR FEATURES

- Innovative Architectural design
- Low maintenance hardiplank siding with intricate boxing and trim, per exterior elevation
- Pilings foundation with brick detail
- Architectural 30 year shingles and pre-finished metal per exterior elevation
- Landscaping with sod and automatic irrigation system
- Conceptual Architectural design approval
- Amarr® "Classica" steel garage doors

GREEN ENERGY & SAFETY FEATURES

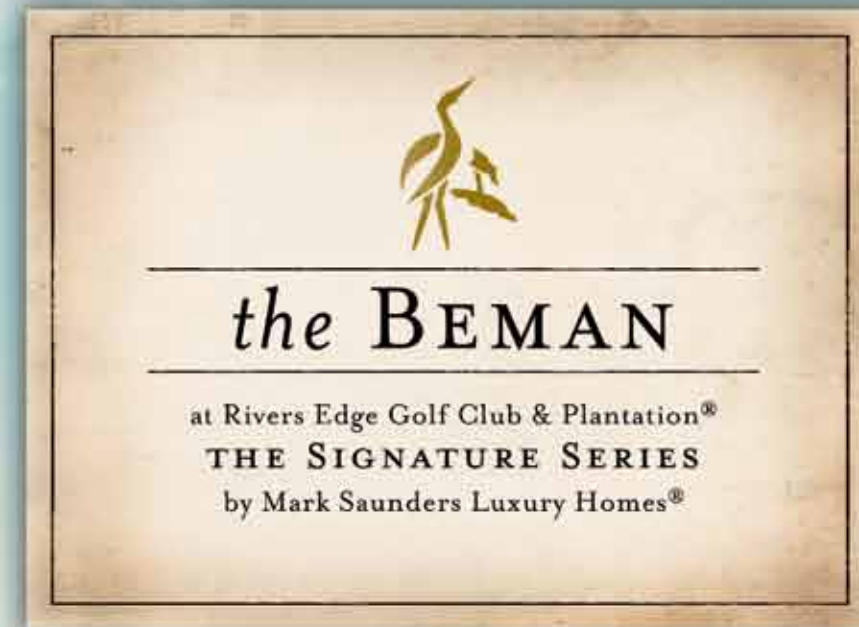
- Efficient Low-E insulated double pane vinyl windows with screens
- Energy efficient heating and cooling system with digital thermostats
- Durable Therma-True® or Plastpro® insulated front door
- Ceiling fans in family room and owner's retreat
- Full six year structural warranty provided



2000 Arnold Palmer Drive • Charlotte, NC 28470 • www.riversedge-nc.com • 800.789.0535



Obtain the Property Report required by Federal law from the Broker-in-Charge at Rivers Edge Golf Club & Plantation LLC and read it before signing anything. No Federal agency has judged the merits or value, if any, of this property. Not a valid offering in any state where registration is required but not yet complete. All provisions of the master plan are subject to change, revision, or deletion by the Developer at its sole discretion, at any time, without notice. Changes and modifications to plans, materials, and specifications may be made without notice. Dimensions and square footages are approximate. Artistic renderings and other images are for illustration purposes only and do not represent a specific home on a platted site plan as defined in the Master Declaration of Covenants and Easements and Architectural Design Guidelines. Home and customer specific detailed drawings and specifications will be furnished to each customer as part of their Construction Agreement. This drawing represents an instrument of service for the exclusive use of Rivers Edge Golf Club & Plantation® and affiliated agents. Reproduction, redistribution, or use of this document without express written permission of the copyright owner is strictly prohibited by law. Copyright © 2010 Rivers Edge Golf Club & Plantation®. Rivers Edge Golf Club & Plantation® and Mark Saunders Luxury Homes® are registered trademarks of The Coastal Companies®. Third party trademarks are used with implied permission and remain the property of their owner.



Illustrative elevations may be shown with optional features.

## THE BURKE

The Burke is an attractive home with a Hip-over-Gable roof and inviting interior room floor plan. An intriguing arrangement of windows and dormers allow for plenty of natural sunlight to cascade through the rooms of the home. Step through the expansive front porch appointed with decorative railings and classic columns to enter a continuous living and dining environment complete with breakfast nook, cozy fireplace, and cooking island. The owner's retreat is on the opposite side of the residence from two intimately scaled guest suites, allowing for private pampering and relaxation when family and friends visit.

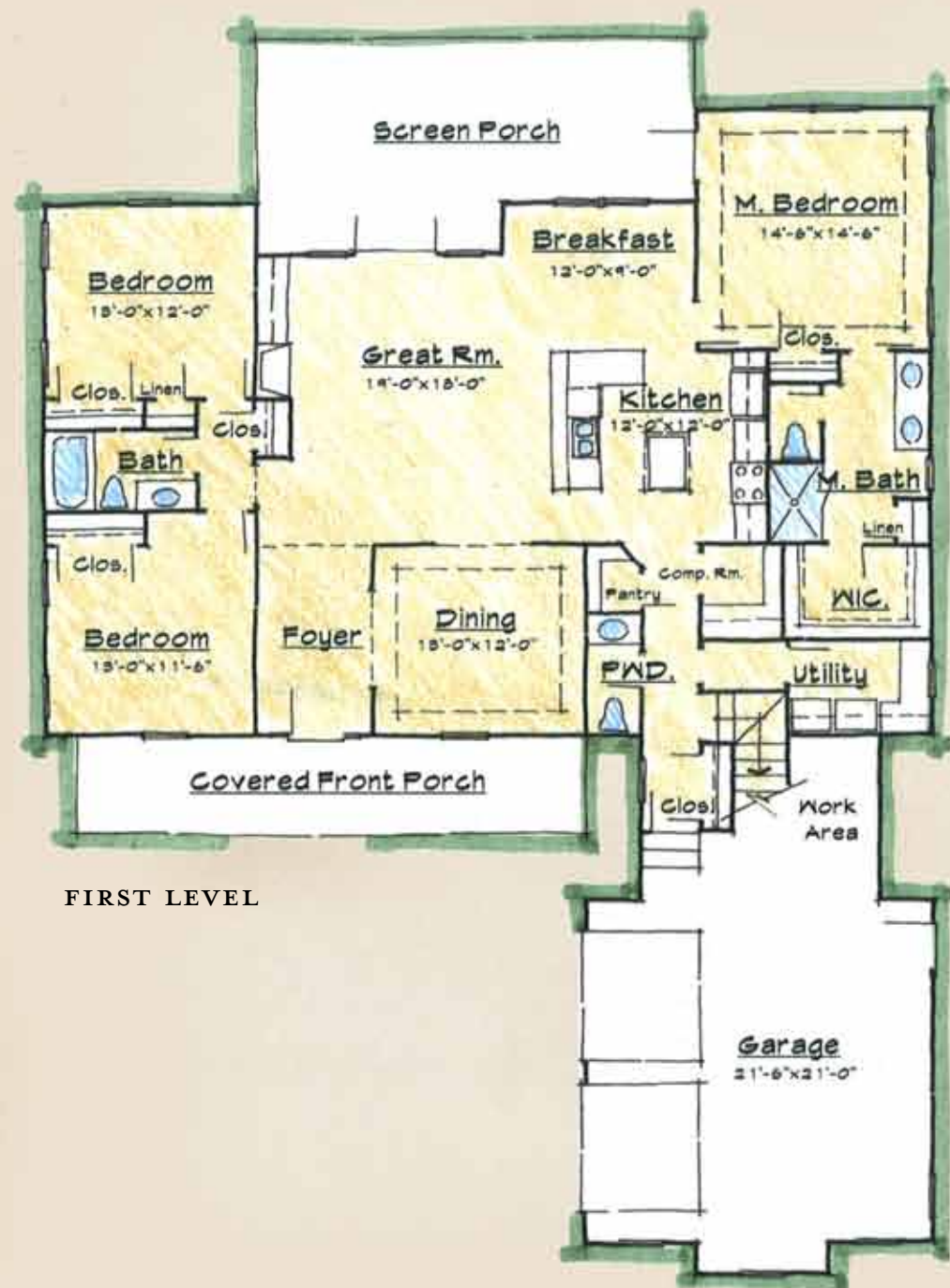
The Signature Series starts with our plan, but becomes your home design. These homes offer extraordinary value, quality construction and the detail that all Mark Saunders Luxury Homes are known for. All designs and floor plans in the series have been pre-approved for construction in Rivers Edge and offer a substantial list of custom possibilities to assist you in creating your dream home. The Signature Series is superior craftsmanship, lasting value, architectural innovation, beautiful designs and attention to detail in your home at an affordable price.

2000 Arnold Palmer Drive, Shallotte, NC 28470  
800.789.0535 • realestate@riversedge-nc.com

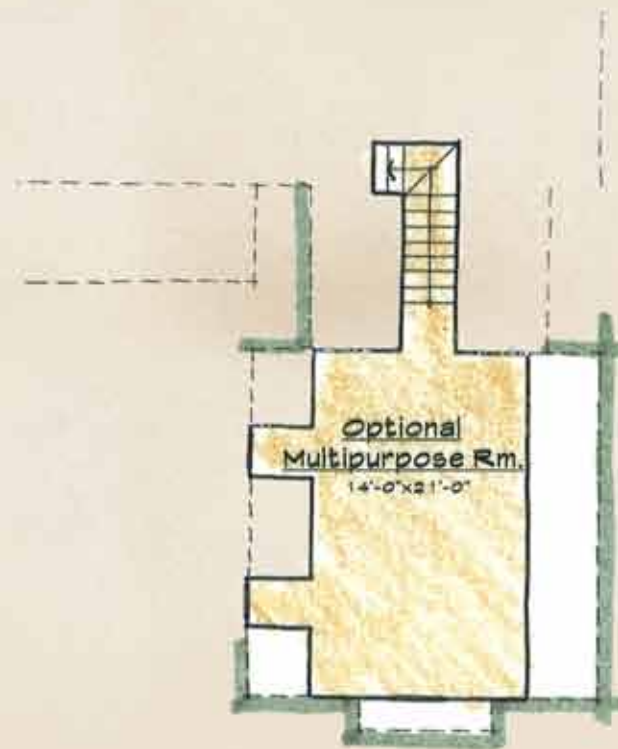
### THE BURKE AT RIVERS EDGE

3 Bedrooms and 2 ½ Baths

Total Climate Controlled (excludes finished multipurpose room)	1,920 sq.ft.
Covered Porches	501 sq.ft.
Garage	560 sq.ft.
Total Living Area	2,981 sq.ft.
*Optional Multipurpose Room	330 sq.ft.



FIRST LEVEL



SECOND LEVEL

DESIGN FEATURES FOR THE BURKE OF THE SIGNATURE SERIES  
AT RIVERS EDGE GOLF CLUB & PLANTATION®

OWNER'S RETREAT

- Spacious walk-in closet for abundant wardrobe storage
- Comfort height water closet
- Shower with ceramic tile walls and glass door enclosure
- Cultured marble double bowl vanity with mirror
- Moen® "Eva" or "Brantford" chrome faucets

GOURMET KITCHEN

- Cooking and entertainment island
- Granite countertops with under-mount stainless steel double sink
- Cabinetry with raised wood panel doors and crown molding (maple)
- Superior GE® Stainless Steel appliances with self-cleaning range, 25.3 cu ft refrigerator, garbage disposal, microwave, and dishwasher
- "Camerist" Moen® chrome faucet

INTERIOR FEATURES

- Professional interior design coordinator
- Classic trim details including oversized baseboards throughout, large window and door casings, and decorative crown molding in the great room, foyer, dining room, kitchen, powder room, and bedrooms
- Smooth finish 9' ceilings
- Sherwin Williams® paint
- "Plymouth" Schlage® door hardware in brushed chrome

- Hardwood flooring in great room, dining room, breakfast room, gourmet kitchen, foyer, and powder room
- Ceramic tile flooring in baths and laundry room
- Plush Mohawk® carpeting in remaining areas of residence
- Cozy fireplace including gas logs, wooden mantle, slate hearth, and built-in cabinetry

ARCHITECTURAL AND EXTERIOR FEATURES

- Innovative Architectural design
- Raised concrete foundation with oversized tumbled brick finish
- Low maintenance hardiplank siding with intricate boxing and trim, per exterior elevation
- Architectural 30 year shingles and pre-finished metal per exterior elevation
- Landscaping with sod and automatic irrigation system
- Conceptual Architectural design approval
- Amarr® "Classica" steel garage doors

GREEN ENERGY & SAFETY FEATURES

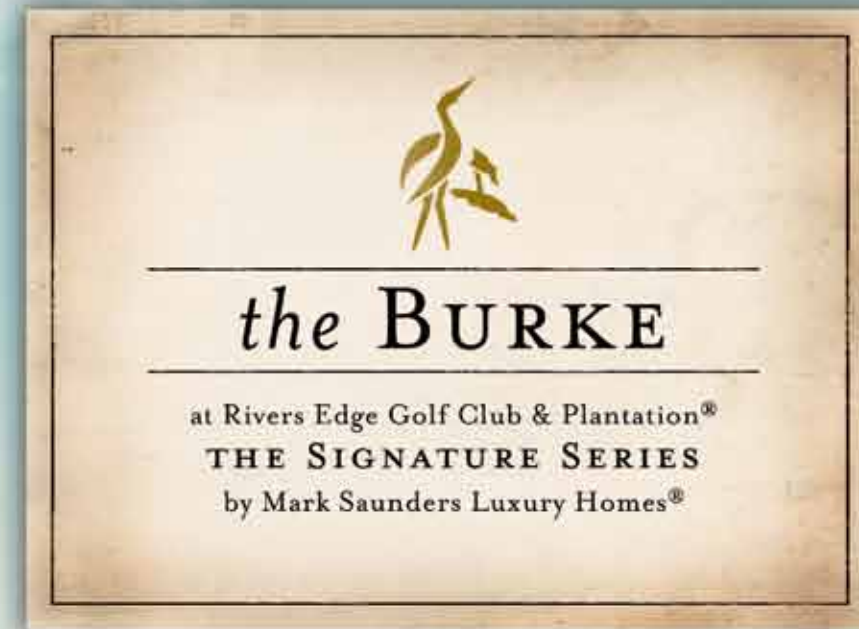
- Efficient Low-E insulated double pane vinyl windows with screens
- Energy efficient heating and cooling system with digital thermostats
- Durable Therma-True® or Plastpro® insulated front door
- Ceiling fans in family room and owner's retreat
- Full six year structural warranty provided



2000 Arnold Palmer Drive • Charlotte, NC 28470 • www.riversedge-nc.com • 800.789.0535



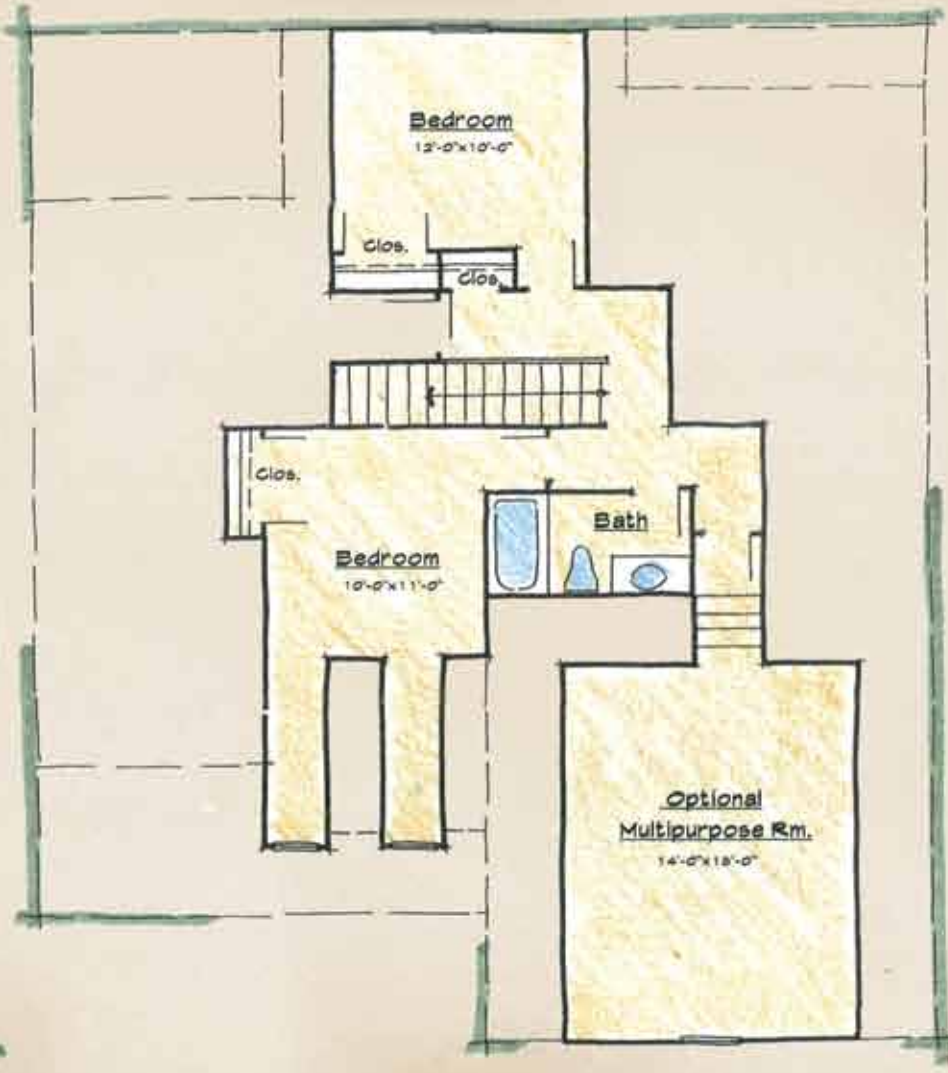
Obtain the Property Report required by Federal law from the Broker-in-Charge at Rivers Edge Golf Club & Plantation LLC and read it before signing anything. No Federal agency has judged the merits or value, if any, of this property. Not a valid offering in any state where registration is required but not yet complete. All provisions of the master plan are subject to change, revision, or deletion by the Developer at its sole discretion, at any time, without notice. Changes and modifications to plans, materials, and specifications may be made without notice. Dimensions and square footages are approximate. Artistic renderings and other images are for illustration purposes only and do not represent a specific home on a platted site plan as defined in the Master Declaration of Covenants and Easements and Architectural Design Guidelines. Home and customer specific detailed drawings and specifications will be furnished to each customer as part of their Construction Agreement. This drawing represents an instrument of service for the exclusive use of Rivers Edge Golf Club & Plantation® and affiliated agents. Reproduction, redistribution, or use of this document without express written permission of the copyright owner is strictly prohibited by law. Copyright © 2010 Rivers Edge Golf Club & Plantation®. Rivers Edge Golf Club & Plantation® and Mark Saunders Luxury Homes® are registered trademarks of The Coastal Companies®. Third party trademarks are used with implied permission and remain the property of their owner.



Illustrative elevations may be shown with optional features.



FIRST LEVEL



SECOND LEVEL

THE CRAMPTON AT RIVERS EDGE	
3 Bedrooms and 2 ½ Baths	
Total Climate Controlled (excludes finished multipurpose room)	1,654 sq.ft.
Covered Porches	216 sq.ft.
Garage	441 sq.ft.
Total Living Area	2,311 sq.ft.
*Optional Multipurpose Room	267 sq.ft.



## THE CRAMPTON

The Crampton cottage is simple, yet refined with an inviting 3 bedroom, 2 ½ bath floor plan that makes good use of every square foot. This home features two living levels with guest suites on the second level, promoting a feeling of comfort and spaciousness. The owner's retreat features a large bedroom, upscale bathroom, and private porch for reading and relaxation. The elevation of the Crampton is beautifully detailed with twin dormers and a two car front entrance garage.

The Signature Series starts with our plan, but becomes your home design. These homes offer extraordinary value, quality construction and the detail that all Mark Saunders Luxury Homes are known for. All designs and floor plans in the series have been pre-approved for construction in Rivers Edge and offer a substantial list of custom possibilities to assist you in creating your dream home. The Signature Series is superior craftsmanship, lasting value, architectural innovation, beautiful designs and attention to detail in your home at an affordable price.

2000 Arnold Palmer Drive, Shallotte, NC 28470  
800.789.0535 • realestate@riversedge-nc.com



Artistic illustration of the front elevation and floor plan are conceptual and subject to change. Dimensions and square footage calculations are taken from the construction plan blueprints. Any unauthorized use or duplication of The Crampton 1a-1854 is a violation of copyright law. Copyright © 2010 Mark Saunders Luxury Homes®. \*Room over the garage is optionally finished.

DESIGN FEATURES FOR THE CRAMPTON OF THE SIGNATURE SERIES  
AT RIVERS EDGE GOLF CLUB & PLANTATION®

OWNER'S RETREAT

- Spacious walk-in closet for abundant wardrobe storage
- Comfort height water closet
- Shower with ceramic tile walls and glass door enclosure
- Cultured marble double bowl vanity with mirror
- Moen® "Eva" or "Brantford" chrome faucets

GOURMET KITCHEN

- Granite countertops with under-mount stainless steel double sink
- Cabinetry with raised wood panel doors and crown molding (maple)
- Superior GE® Stainless Steel appliances with self-cleaning range, 25.3 cu ft refrigerator, garbage disposal, microwave, and dishwasher
- "Camerist" Moen® chrome faucet

INTERIOR FEATURES

- Professional interior design coordinator
- Classic trim details including oversized baseboards throughout, large window and door casings, and decorative crown molding in the great room, foyer, dining room, kitchen, powder room, and bedrooms
- Smooth finish 9' ceilings
- Sherwin Williams® paint
- "Plymouth" Schlage® door hardware in brushed chrome

- Hardwood flooring in great room, dining room, breakfast room, gourmet kitchen, foyer, and powder room
- Ceramic tile flooring in baths and laundry room
- Plush Mohawk® carpeting in remaining areas of residence
- Cozy fireplace including gas logs, wooden mantle, slate hearth, and built-in cabinetry

ARCHITECTURAL AND EXTERIOR FEATURES

- Innovative Architectural design
- Raised concrete foundation with oversized tumbled brick finish
- Low maintenance hardiplank siding with intricate boxing and trim, per exterior elevation
- Architectural 30 year shingles and pre-finished metal per exterior elevation
- Landscaping with sod and automatic irrigation system
- Conceptual Architectural design approval
- Amarr® "Classica" steel garage doors

GREEN ENERGY & SAFETY FEATURES

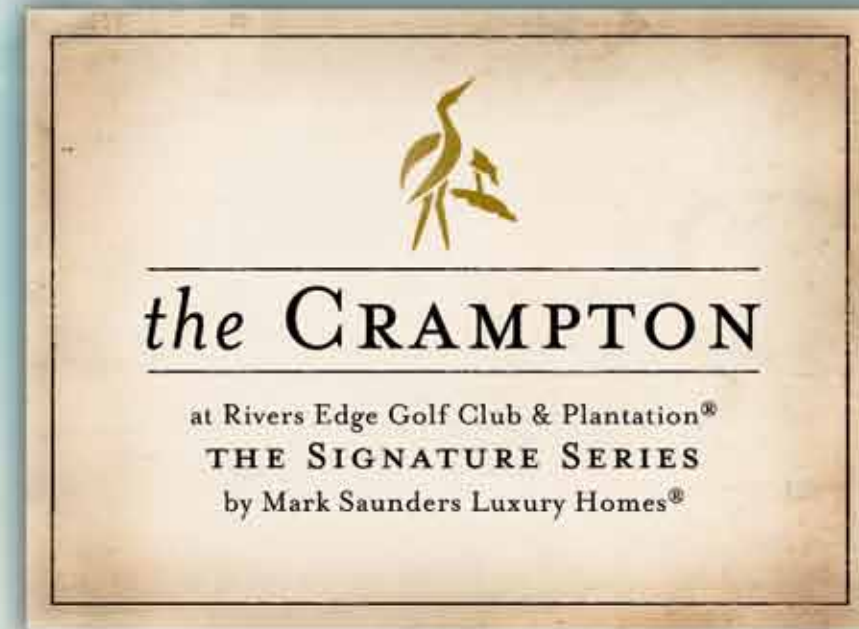
- Efficient Low-E insulated double pane vinyl windows with screens
- Energy efficient heating and cooling system with digital thermostats
- Durable Therma-True® or Plastpro® insulated front door
- Ceiling fans in family room and owner's retreat
- Full six year structural warranty provided



2000 Arnold Palmer Drive • Shallotte, NC 28470 • www.riversedge-nc.com • 800.789.0535



Obtain the Property Report required by Federal law from the Broker-in-Charge at Rivers Edge Golf Club & Plantation LLC and read it before signing anything. No Federal agency has judged the merits or value, if any, of this property. Not a valid offering in any state where registration is required but not yet complete. All provisions of the master plan are subject to change, revision, or deletion by the Developer at its sole discretion, at any time, without notice. Changes and modifications to plans, materials, and specifications may be made without notice. Dimensions and square footages are approximate. Artistic renderings and other images are for illustration purposes only and do not represent a specific home on a platted site plan as defined in the Master Declaration of Covenants and Easements and Architectural Design Guidelines. Home and customer specific detailed drawings and specifications will be furnished to each customer as part of their Construction Agreement. This drawing represents an instrument of service for the exclusive use of Rivers Edge Golf Club & Plantation® and affiliated agents. Reproduction, redistribution, or use of this document without express written permission of the copyright owner is strictly prohibited by law. Copyright © 2010 Rivers Edge Golf Club & Plantation®. Rivers Edge Golf Club & Plantation® and Mark Saunders Luxury Homes® are registered trademarks of The Coastal Companies®. Third party trademarks are used with implied permission and remain the property of their owner.



Illustrative elevations may be shown with optional features.

## THE HARMON

The Harmon home is a favorite look for the Rivers Edge community with a wrap-around front porch, twin dormers, and an intriguing window arrangement. A front-entry two car garage makes for easy access to and from the residence. Inside, discover an open floor plan with a cottage-style breakfast nook, private owner's retreat featuring two walk-in closets for abundant wardrobe storage, two guest suites each with their own private bath, and a spacious great room complete with a cozy fireplace, a spot the whole family will love.

The Signature Series starts with our plan, but becomes your home design. These homes offer extraordinary value, quality construction and the detail that all Mark Saunders Luxury Homes are known for. All designs and floor plans in the series have been pre-approved for construction in Rivers Edge and offer a substantial list of custom possibilities to assist you in creating your dream home. The Signature Series is superior craftsmanship, lasting value, architectural innovation, beautiful designs and attention to detail in your home at an affordable price.

2000 Arnold Palmer Drive, Shallotte, NC 28470  
800.789.0535 • realestate@riversedge-nc.com



FIRST LEVEL

THE HARMON AT RIVERS EDGE	
3 Bedrooms and 3 Baths	
Total Climate Controlled (excludes finished multipurpose room)	1,914 sq.ft.
Covered Porches	360 sq.ft.
Garage	522 sq.ft.
Total Living Area	2,796 sq.ft.
*Optional Multipurpose Room	325 sq.ft.



SECOND LEVEL

DESIGN FEATURES FOR THE HARMON OF THE SIGNATURE SERIES  
AT RIVERS EDGE GOLF CLUB & PLANTATION®

OWNER'S RETREAT

- Spacious walk-in closets for abundant wardrobe storage
- Comfort height water closet
- Shower with ceramic tile walls and glass door enclosure
- Cultured marble double bowl vanity with mirror
- Moen® "Eva" or "Brantford" chrome faucets

GOURMET KITCHEN

- Granite countertops with under-mount stainless steel double sink
- Cabinetry with raised wood panel doors and crown molding (maple)
- Superior GE® Stainless Steele appliances with self-cleaning range, 25.3 cu ft refrigerator, garbage disposal, microwave, and dishwasher
- "Camerist" Moen® chrome faucet

INTERIOR FEATURES

- Professional interior design coordinator
- Classic trim details including oversized baseboards throughout, large window and door casings, and decorative crown molding in the great room, foyer, dining room, kitchen, powder room, and bedrooms
- Smooth finish 9' ceilings
- Sherwin Williams® paint
- "Plymouth" Schlage® door hardware in brushed chrome

- Hardwood flooring in great room, dining room, breakfast room, gourmet kitchen, foyer, and powder room
- Ceramic tile flooring in baths and laundry room
- Plush Mohawk® carpeting in remaining areas of residence
- Cozy fireplace including gas logs, wooden mantle, slate hearth, and built-in cabinetry

ARCHITECTURAL AND EXTERIOR FEATURES

- Innovative Architectural design
- Raised concrete foundation with oversized tumbled brick finish
- Low maintenance hardiplank siding with intricate boxing and trim, per exterior elevation
- Architectural 30 year shingles and pre-finished metal per exterior elevation
- Landscaping with sod and automatic irrigation system
- Conceptual Architectural design approval
- Amarr® "Classica" steel garage doors

GREEN ENERGY & SAFETY FEATURES

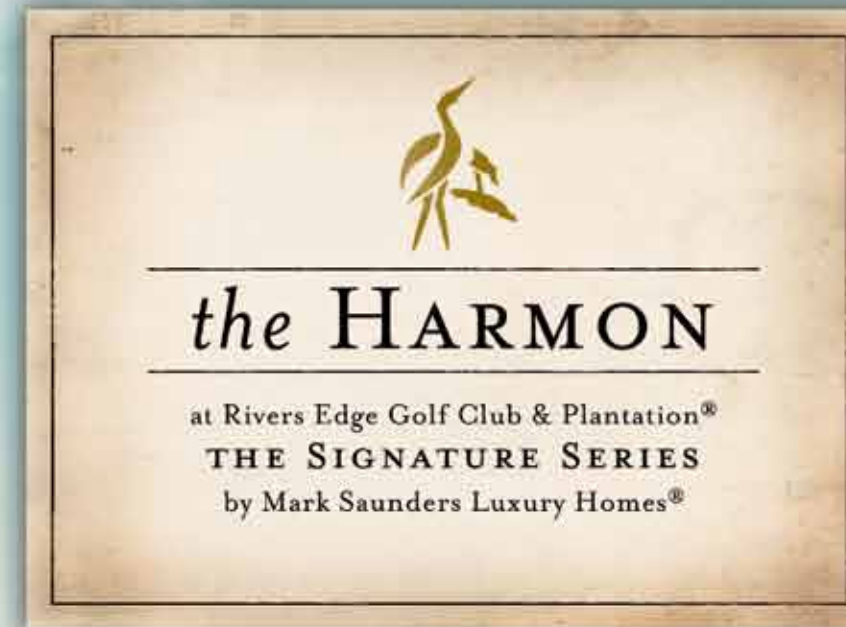
- Efficient Low-E insulated double pane vinyl windows with screens
- Energy efficient heating and cooling system with digital thermostats
- Durable Therma-True® or Plastpro® insulated front door
- Ceiling fans in family room and owner's retreat
- Full six year structural warranty provided



2000 Arnold Palmer Drive • Shallotte, NC 28470 • www.riversedge-nc.com • 800.789.0535



Obtain the Property Report required by Federal law from the Broker-in-Charge at Rivers Edge Golf Club & Plantation LLC and read it before signing anything. No Federal agency has judged the merits or value, if any, of this property. Not a valid offering in any state where registration is required but not yet complete. All provisions of the master plan are subject to change, revision, or deletion by the Developer at its sole discretion, at any time, without notice. Changes and modifications to plans, materials, and specifications may be made without notice. Dimensions and square footages are approximate. Artistic renderings and other images are for illustration purposes only and do not represent a specific home on a platted site plan as defined in the Master Declaration of Covenants and Easements and Architectural Design Guidelines. Home and customer specific detailed drawings and specifications will be furnished to each customer as part of their Construction Agreement. This drawing represents an instrument of service for the exclusive use of Rivers Edge Golf Club & Plantation® and affiliated agents. Reproduction, redistribution, or use of this document without express written permission of the copyright owner is strictly prohibited by law. Copyright © 2010 Rivers Edge Golf Club & Plantation®. Rivers Edge Golf Club & Plantation® and Mark Saunders Luxury Homes® are registered trademarks of The Coastal Companies®. Third party trademarks are used with implied permission and remain the property of their owner.

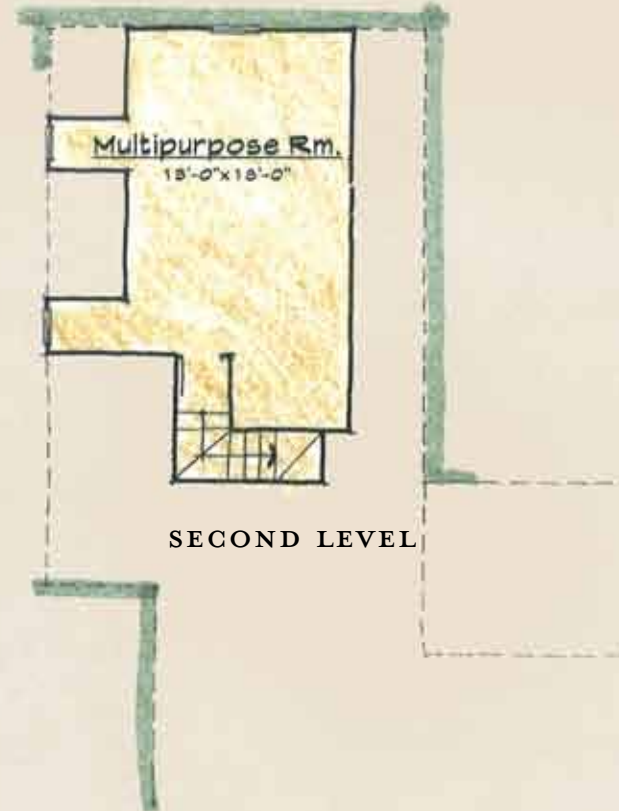


Illustrative elevations may be shown with optional features.





FIRST LEVEL



SECOND LEVEL

THE KEISER AT RIVERS EDGE	
3 Bedrooms and 2 1/2 Baths	
Total First Level	1,640 sq. ft.
Included Multipurpose Room	298 sq. ft.
Total Climate Controlled	1,938 sq. ft.
Covered Porches	452 sq. ft.
Garage	520 sq. ft.
Total Living Area	2,910 sq. ft.



## THE KEISER

The design for the Keiser home is of a traditional style, complete with a generous front porch, grand columns, matching dormers, and ample windows. Step through the front porch into an inviting floor plan with spacious owner's retreat, two guest bedrooms with adjoining bath, and an expansive great room that opens to a large screen porch. The kitchen is lovely and conveniently centered between the casual breakfast room and formal dining room, making it a breeze to entertain and host dinner parties. Traditional and sophisticated, the Keiser will make a wonderful living environment in Rivers Edge.

The Signature Series starts with our plan, but becomes your home design. These homes offer extraordinary value, quality construction and the detail that all Mark Saunders Luxury Homes are known for. All designs and floor plans in the series have been pre-approved for construction in Rivers Edge and offer a substantial list of custom possibilities to assist you in creating your dream home. The Signature Series is superior craftsmanship, lasting value, architectural innovation, beautiful designs and attention to detail in your home at an affordable price.

2000 Arnold Palmer Drive, Shallotte, NC 28470  
 800.789.0535 • realestate@riversedge-nc.com



Artistic illustration of the front elevation and floor plan are conceptual and subject to change. Dimensions and square footage calculations are taken from the construction plan blueprints. Any unauthorized use or duplication of The Keiser 2a-1640 is a violation of copyright law. Copyright © 2010 Mark Saunders Luxury Homes®.

DESIGN FEATURES FOR THE KEISER OF THE SIGNATURE SERIES  
AT RIVERS EDGE GOLF CLUB & PLANTATION®

OWNER'S RETREAT

- Spacious walk-in closets for abundant wardrobe storage
- Comfort height water closet
- Shower with ceramic tile walls and glass door enclosure
- Cultured marble double bowl vanity with mirror
- Moen® "Eva" or "Brantford" chrome faucets

GOURMET KITCHEN

- Cooking and entertainment island
- Granite countertops with under-mount stainless steel double sink
- Cabinetry with raised wood panel doors and crown molding (maple)
- Superior GE® Stainless Steel appliances with self-cleaning range, 25.3 cu ft refrigerator, garbage disposal, microwave, and dishwasher
- "Camerist" Moen® chrome faucet

INTERIOR FEATURES

- Professional interior design coordinator
- Classic trim details including oversized baseboards throughout, large window and door casings, and decorative crown molding in the great room, foyer, dining room, kitchen, powder room, and bedrooms
- Smooth finish 9' ceilings
- Sherwin Williams® paint
- "Plymouth" Schlage® door hardware in brushed chrome

- Hardwood flooring in great room, dining room, breakfast room, gourmet kitchen, foyer, and powder room
- Ceramic tile flooring in baths and laundry room
- Plush Mohawk® carpeting in remaining areas of residence
- Cozy fireplace including gas logs, wooden mantle, slate hearth, and built-in cabinetry

ARCHITECTURAL AND EXTERIOR FEATURES

- Innovative Architectural design
- Raised concrete foundation with oversized tumbled brick finish
- Low maintenance hardiplank siding with intricate boxing and trim, per exterior elevation
- Architectural 30 year shingles and pre-finished metal per exterior elevation
- Landscaping with sod and automatic irrigation system
- Conceptual Architectural design approval
- Amarr® "Classica" steel garage doors

GREEN ENERGY & SAFETY FEATURES

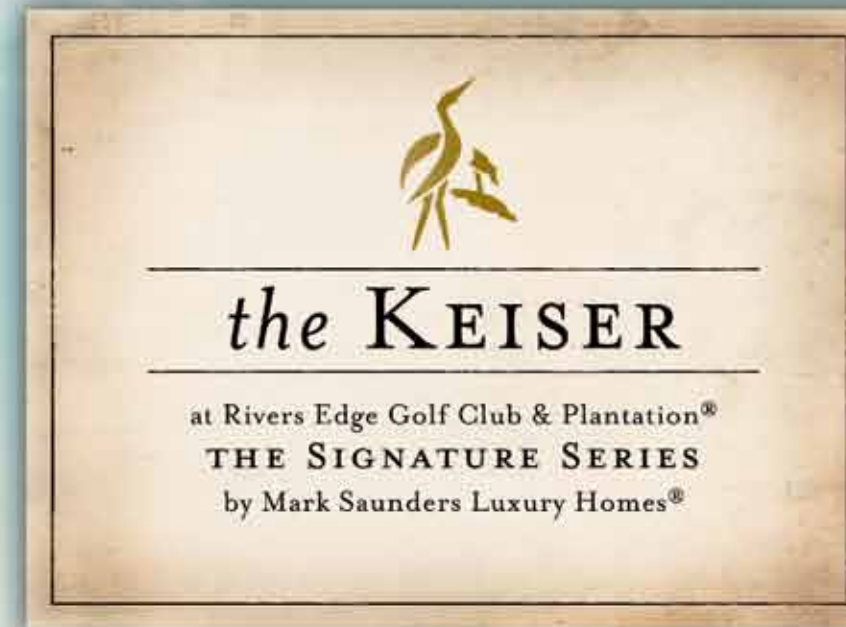
- Efficient Low-E insulated double pane vinyl windows with screens
- Energy efficient heating and cooling system with digital thermostats
- Durable Therma-True® or Plastpro® insulated front door
- Ceiling fans in family room and owner's retreat
- Full six year structural warranty provided



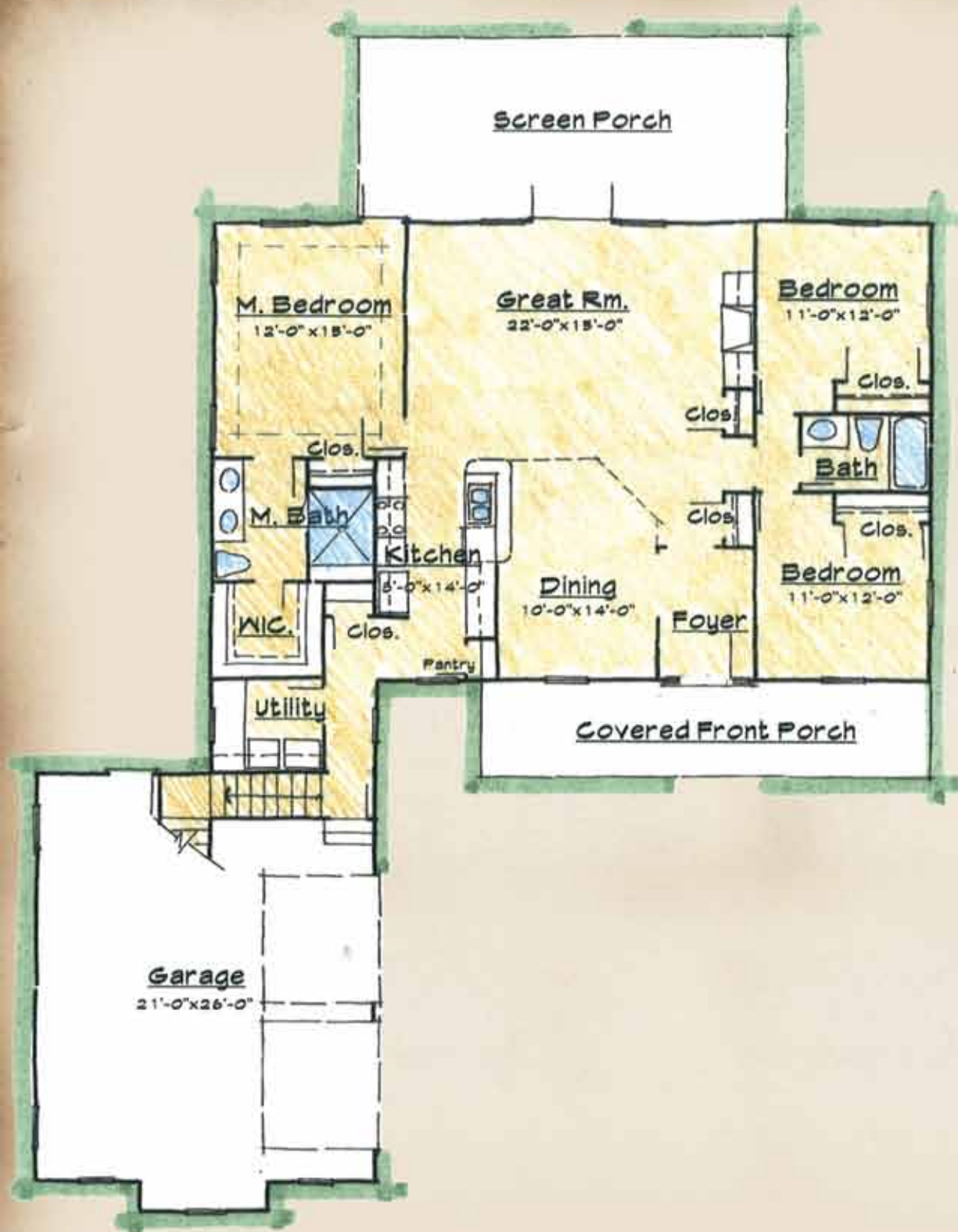
2000 Arnold Palmer Drive • Charlotte, NC 28470 • www.riversedge-nc.com • 800.789.0535



Obtain the Property Report required by Federal law from the Broker-in-Charge at Rivers Edge Golf Club & Plantation LLC and read it before signing anything. No Federal agency has judged the merits or value, if any, of this property. Not a valid offering in any state where registration is required but not yet complete. All provisions of the master plan are subject to change, revision, or deletion by the Developer at its sole discretion, at any time, without notice. Changes and modifications to plans, materials, and specifications may be made without notice. Dimensions and square footages are approximate. Artistic renderings and other images are for illustration purposes only and do not represent a specific home on a platted site plan as defined in the Master Declaration of Covenants and Easements and Architectural Design Guidelines. Home and customer specific detailed drawings and specifications will be furnished to each customer as part of their Construction Agreement. This drawing represents an instrument of service for the exclusive use of Rivers Edge Golf Club & Plantation® and affiliated agents. Reproduction, redistribution, or use of this document without express written permission of the copyright owner is strictly prohibited by law. Copyright © 2010 Rivers Edge Golf Club & Plantation®. Rivers Edge Golf Club & Plantation® and Mark Saunders Luxury Homes® are registered trademarks of The Coastal Companies®. Third party trademarks are used with implied permission and remain the property of their owner.

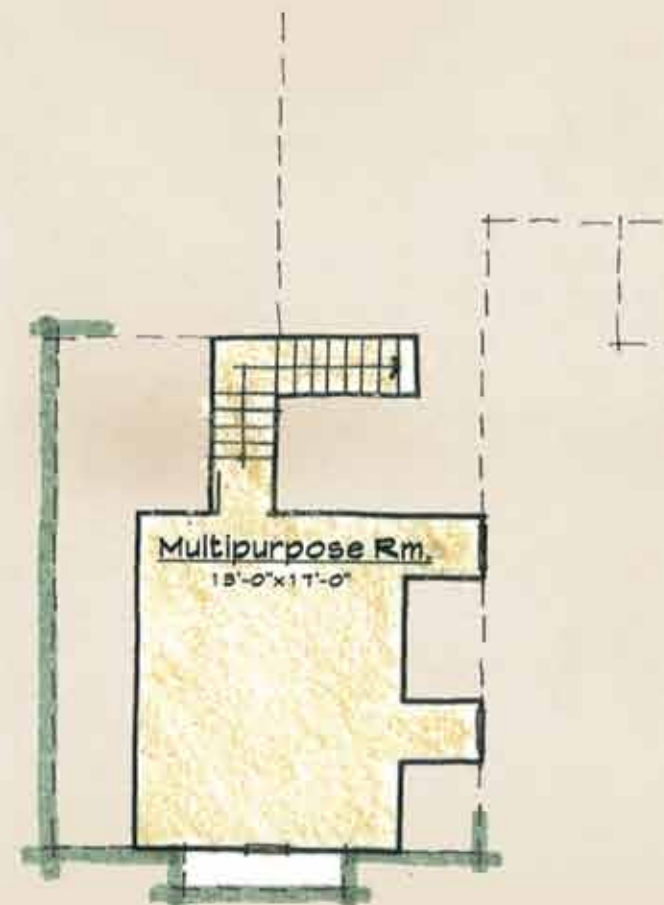


Illustrative elevations may be shown with optional features.



FIRST LEVEL

THE ARCHER AT RIVERS EDGE	
3 Bedrooms and 2 Baths	
Total First Level	1,400 sq.ft.
Included Multipurpose Room	272 sq.ft.
Total Climate Controlled	1,672 sq.ft.
Covered Porches	511 sq.ft.
Garage	575 sq.ft.
Total Living Area	2,758 sq.ft.



SECOND LEVEL



## THE ARCHER

Welcome home to the Archer, a charming design with broad sweeping front porch and gingerbread style ornamentation. Inside is an intimately scaled floor plan featuring gourmet kitchen, great room with cozy fireplace, elegant dining room, owner's retreat, and guest rooms all on the first living level of the home. Included as an added bonus, the upstairs multipurpose room can be used as a craft room, home office, or fitness center.

The Signature Series starts with our plan, but becomes your home design. These homes offer extraordinary value, quality construction and the detail that all Mark Saunders Luxury Homes are known for. All designs and floor plans in the series have been pre-approved for construction in Rivers Edge and offer a substantial list of custom possibilities to assist you in creating your dream home. The Signature Series is superior craftsmanship, lasting value, architectural innovation, beautiful designs and attention to detail in your home at an affordable price.

2000 Arnold Palmer Drive, Shallotte, NC 28470  
800.789.0535 • realestate@riversedge-nc.com



Artistic illustration of the front elevation and floor plan are conceptual and subject to change. Dimensions and square footage calculations are taken from the construction plan blueprints. Any unauthorized use or duplication of The Archer 1a-1672 is a violation of copyright law. Copyright © 2010 Mark Saunders Luxury Homes®.

DESIGN FEATURES FOR THE ARCHER OF THE SIGNATURE SERIES  
AT RIVERS EDGE GOLF CLUB & PLANTATION®

OWNER'S RETREAT

- Spacious walk-in closets for abundant wardrobe storage
- Comfort height water closet
- Shower with ceramic tile walls and glass door enclosure
- Cultured marble double bowl vanity with mirror
- Moen® "Eva" or "Brantford" chrome faucets

GOURMET KITCHEN

- Granite countertops with under-mount stainless steel double sink
- Cabinetry with raised wood panel doors and crown molding (maple)
- Superior GE® Stainless Steel appliances with self-cleaning range, 25.3 cu ft refrigerator, garbage disposal, microwave, and dishwasher
- "Camerist" Moen® chrome faucet

INTERIOR FEATURES

- Professional interior design coordinator
- Classic trim details including oversized baseboards throughout, large window and door casings, and decorative crown molding in the great room, foyer, dining room, kitchen, powder room, and bedrooms
- Smooth finish 9' ceilings
- Sherwin Williams® paint
- "Plymouth" Schlage® door hardware in brushed chrome
- Hardwood flooring in great room, dining room, breakfast room, gourmet kitchen, foyer, and powder room

- Ceramic tile flooring in baths and laundry room
- Plush Mohawk® carpeting in remaining areas of residence
- Cozy fireplace including gas logs, wooden mantle, slate hearth, and built-in cabinetry

ARCHITECTURAL AND EXTERIOR FEATURES

- Innovative Architectural design
- Low maintenance hardiplank siding with intricate boxing and trim, per exterior elevation
- Pilings foundation with brick detail
- Architectural 30 year shingles and pre-finished metal per exterior elevation
- Landscaping with sod and automatic irrigation system
- Conceptual Architectural design approval
- Amarr® "Classica" steel garage doors

GREEN ENERGY & SAFETY FEATURES

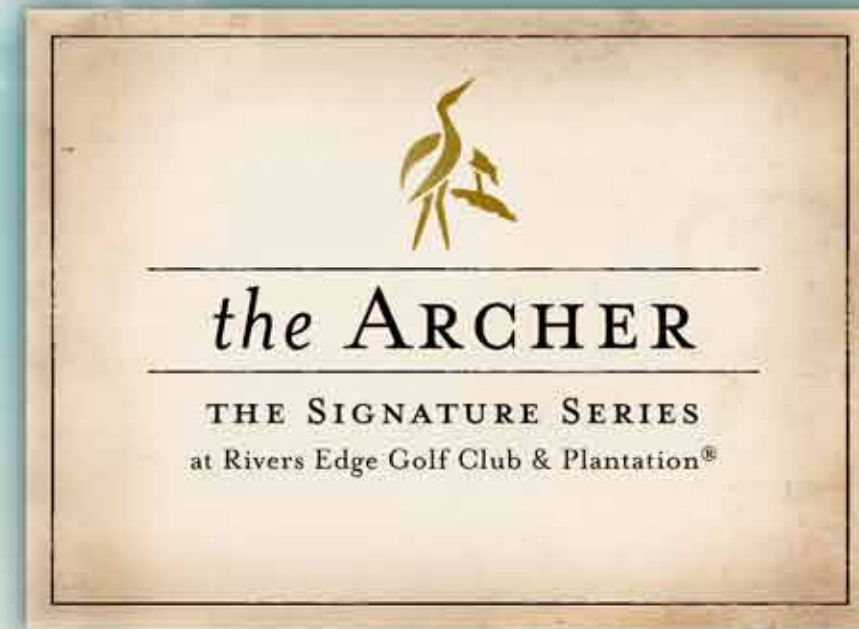
- Efficient Low-E insulated double pane vinyl windows with screens
- Energy efficient heating and cooling system with digital thermostats
- Durable Therma-True or Plastpro insulated front door
- Ceiling fans in family room and owner's retreat
- Full six year structural warranty



2000 Arnold Palmer Drive • Shallotte, NC 28470 • www.riversedge-nc.com • 800.789.0535



Obtain the Property Report required by Federal law from the Broker-in-Charge at Rivers Edge Golf Club & Plantation LLC and read it before signing anything. No Federal agency has judged the merits or value, if any, of this property. Not a valid offering in any state where registration is required but not yet complete. All provisions of the master plan are subject to change, revision, or deletion by the Developer at its sole discretion, at any time, without notice. Changes and modifications to plans, materials, and specifications may be made without notice. Dimensions and square footages are approximate. Artistic renderings and other images are for illustration purposes only and do not represent a specific home on a platted site plan as defined in the Master Declaration of Covenants and Easements and Architectural Design Guidelines. Home and customer specific detailed drawings and specifications will be furnished to each customer as part of their Construction Agreement. This drawing represents an instrument of service for the exclusive use of Rivers Edge Golf Club & Plantation® and affiliated agents. Reproduction, redistribution, or use of this document without express written permission of the copyright owner is strictly prohibited by law. Copyright © 2010 Rivers Edge Golf Club & Plantation®. Rivers Edge Golf Club & Plantation® and Mark Saunders Luxury Homes® are registered trademarks of The Coastal Companies®. Third party trademarks are used with implied permission and remain the property of their owner.



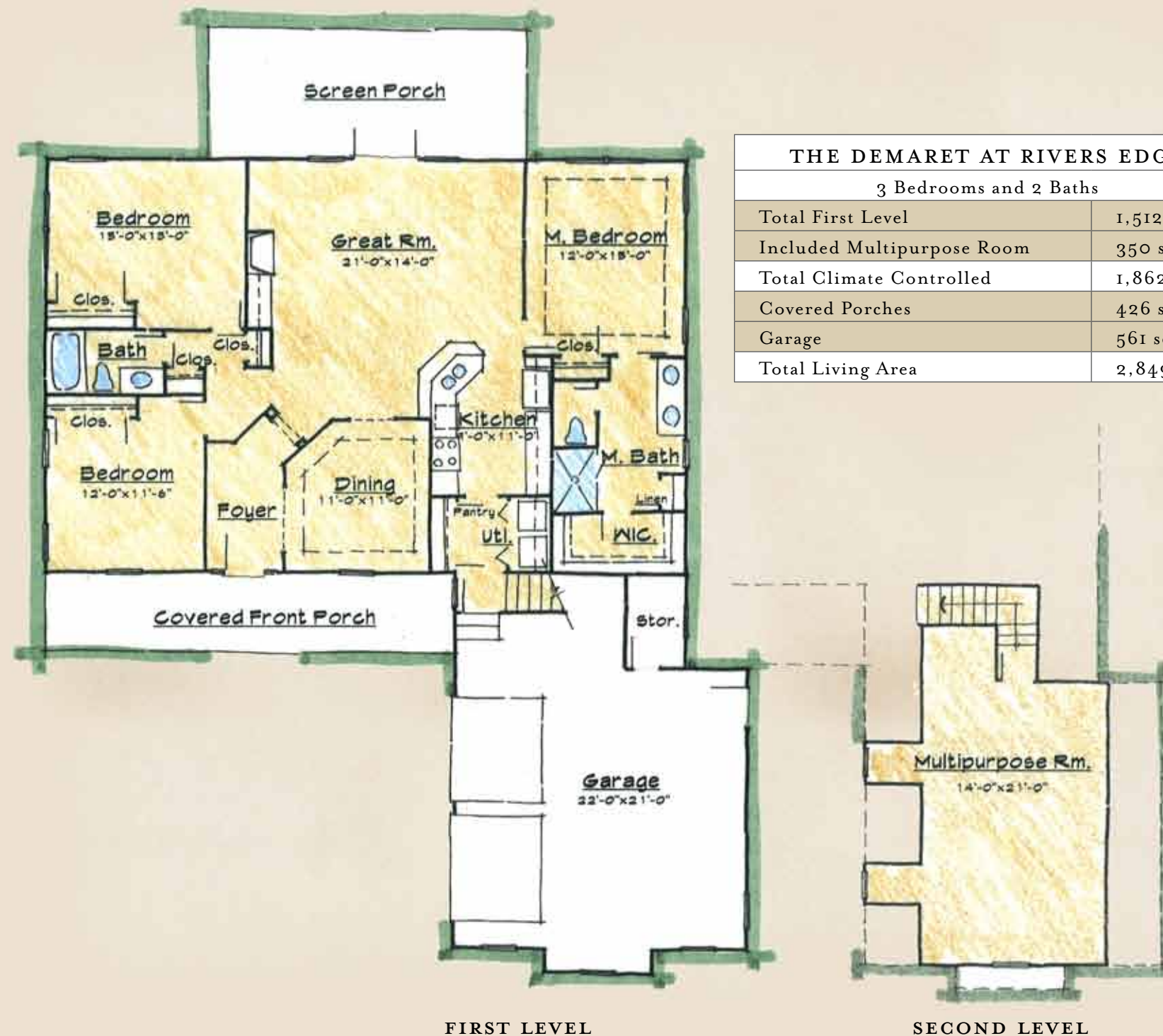
Illustrative elevations may be shown with optional features.

## THE DEMARET

A formal arrangement has been selected for the Demaret. An elegant foyer and dining room, expansive great room, private owner's retreat, and guest rooms create the arrangement for this inviting space. Rooms are intimately scaled and well thought of. A screen porch immediately off of the great room expands the living space, bringing the outdoors in. The multipurpose room is included on the second level of the home, providing an ample space for fitness, crafting, starting a home business, and more.

The Signature Series starts with our plan, but becomes your home design. These homes offer extraordinary value, quality construction and the detail that all Mark Saunders Luxury Homes are known for. All designs and floor plans in the series have been pre-approved for construction in Rivers Edge and offer a substantial list of custom possibilities to assist you in creating your dream home. The Signature Series is superior craftsmanship, lasting value, architectural innovation, beautiful designs and attention to detail in your home at an affordable price.

2000 Arnold Palmer Drive, Shallotte, NC 28470  
800.789.0535 • realestate@riversedge-nc.com



DESIGN FEATURES FOR THE DEMARET OF THE SIGNATURE SERIES  
AT RIVERS EDGE GOLF CLUB & PLANTATION®

OWNER'S RETREAT

- Spacious walk-in closets for abundant wardrobe storage
- Comfort height water closet
- Shower with ceramic tile walls and glass door enclosure
- Cultured marble double bowl vanity with mirror
- Moen® "Eva" or "Brantford" chrome faucets

GOURMET KITCHEN

- Granite countertops with under-mount stainless steel double sink
- Cabinetry with raised wood panel doors and crown molding (maple)
- Superior GE® Stainless Steel appliances with self-cleaning range, 25.3 cu ft refrigerator, garbage disposal, microwave, and dishwasher
- "Camerist" Moen® chrome faucet

INTERIOR FEATURES

- Professional interior design coordinator
- Classic trim details including oversized baseboards throughout, large window and door casings, and decorative crown molding in the great room, foyer, dining room, kitchen, powder room, and bedrooms
- Smooth finish 9' ceilings
- Sherwin Williams® paint
- "Plymouth" Schlage® door hardware in brushed chrome
- Hardwood flooring in great room, dining room, breakfast room, gourmet kitchen, foyer, and powder room

- Ceramic tile flooring in baths and laundry room
- Plush Mohawk® carpeting in remaining areas of residence
- Cozy fireplace including gas logs, wooden mantle, slate hearth, and built-in cabinetry

ARCHITECTURAL AND EXTERIOR FEATURES

- Innovative Architectural design
- Raised concrete foundation with oversized tumbled brick finish
- Low maintenance hardiplank siding with intricate boxing and trim, per exterior elevation
- Architectural 30 year shingles and pre-finished metal per exterior elevation
- Landscaping with sod and automatic irrigation system
- Conceptual Architectural design approval
- Amarr® "Classica" steel garage doors

GREEN ENERGY & SAFETY FEATURES

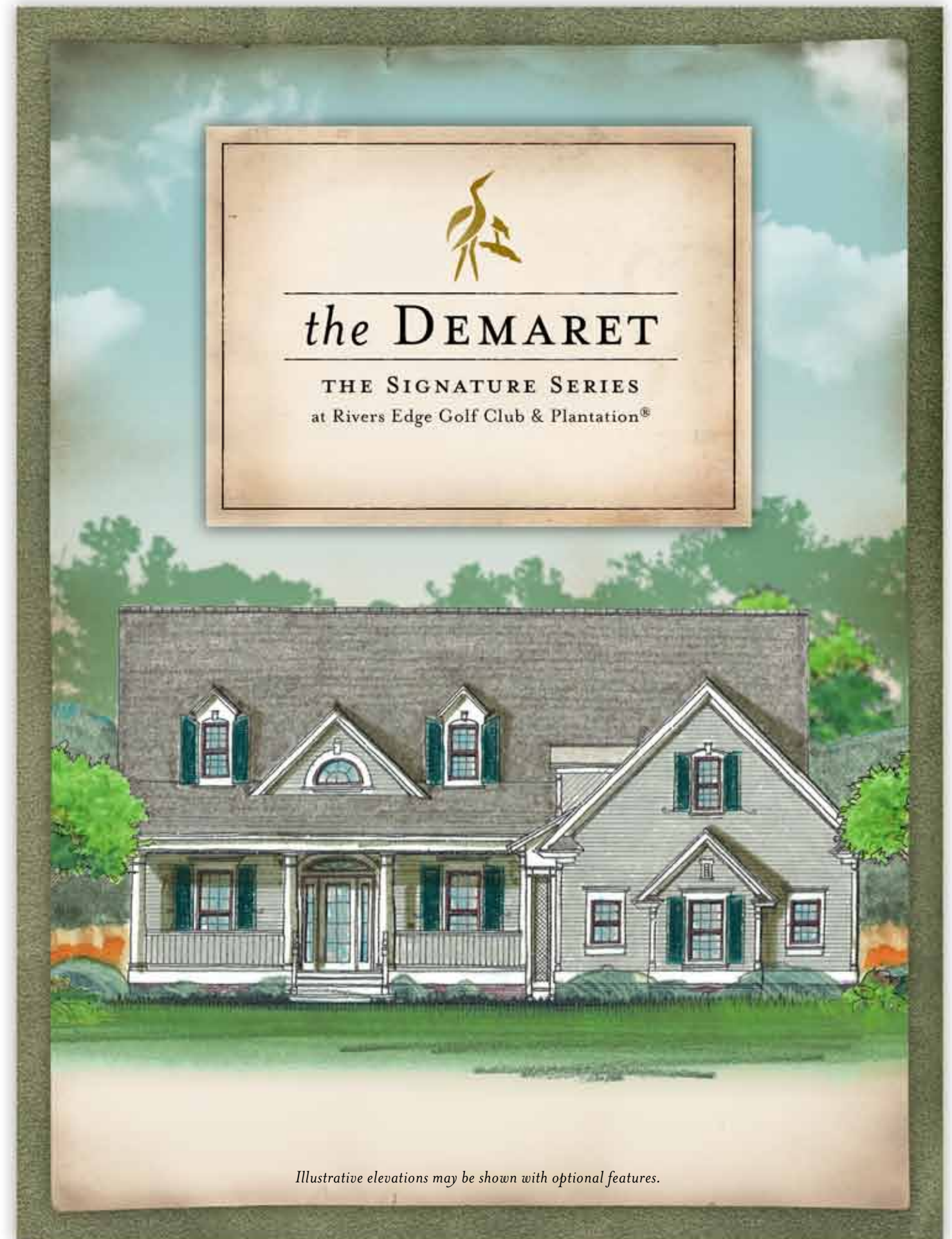
- Efficient Low-E insulated double pane vinyl windows with screens
- Energy efficient heating and cooling system with digital thermostats
- Durable Therma-True or Plastpro insulated front door
- Ceiling fans in family room and owner's retreat
- Full six year structural warranty



2000 Arnold Palmer Drive • Shallotte, NC 28470 • [www.riversedge-nc.com](http://www.riversedge-nc.com) • 800.789.0535



Obtain the Property Report required by Federal law from the Broker-in-Charge at Rivers Edge Golf Club & Plantation LLC and read it before signing anything. No Federal agency has judged the merits or value, if any, of this property. Not a valid offering in any state where registration is required but not yet complete. All provisions of the master plan are subject to change, revision, or deletion by the Developer at its sole discretion, at any time, without notice. Changes and modifications to plans, materials, and specifications may be made without notice. Dimensions and square footages are approximate. Artistic renderings and other images are for illustration purposes only and do not represent a specific home on a platted site plan as defined in the Master Declaration of Covenants and Easements and Architectural Design Guidelines. Home and customer specific detailed drawings and specifications will be furnished to each customer as part of their Construction Agreement. This drawing represents an instrument of service for the exclusive use of Rivers Edge Golf Club & Plantation® and affiliated agents. Reproduction, redistribution, or use of this document without express written permission of the copyright owner is strictly prohibited by law. Copyright © 2010 Rivers Edge Golf Club & Plantation®. Rivers Edge Golf Club & Plantation® and Mark Saunders Luxury Homes® are registered trademarks of The Coastal Companies®. Third party trademarks are used with implied permission and remain the property of their owner.



Illustrative elevations may be shown with optional features.

## THE HENNING

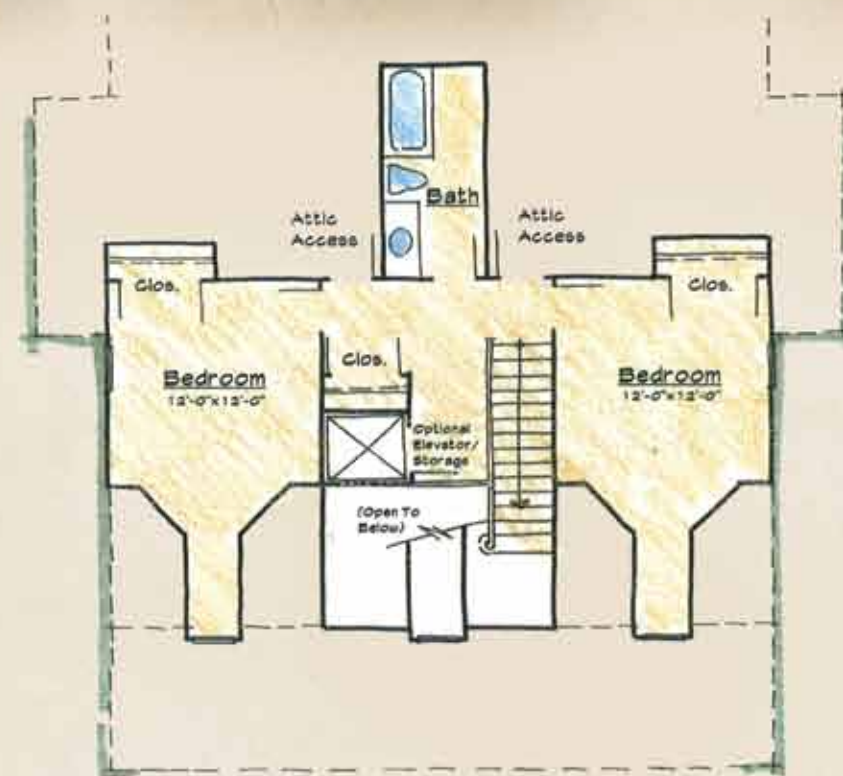
The Henning is creatively designed and elevated to capture the beautiful golf and river views at Rivers Edge. Architecturally, this home is well balanced with classic columns on its broad front porch, matching dormers, and carriage-style garage doors. Designed with a fabulous view in mind, the main living area is located on the second level of the home. The kitchen is thoughtfully arranged between the breakfast and formal dining rooms and includes a cooking island and built-in pantry. On the opposite side of the residence the owner's retreat is nicely sized and includes a private entrance to one of the many outdoor living spaces.

The Signature Series starts with our plan, but becomes your home design. These homes offer extraordinary value, quality construction and the detail that all Mark Saunders Luxury Homes are known for. All designs and floor plans in the series have been pre-approved for construction in Rivers Edge and offer a substantial list of custom possibilities to assist you in creating your dream home. The Signature Series is superior craftsmanship, lasting value, architectural innovation, beautiful designs and attention to detail in your home at an affordable price.

2000 Arnold Palmer Drive, Shallotte, NC 28470  
 800.789.0535 • [realestate@riversedge-nc.com](mailto:realestate@riversedge-nc.com)



FIRST LEVEL



SECOND LEVEL



GROUND LEVEL

THE HENNING AT RIVERS EDGE	
3 Bedrooms and 2 ½ Baths	
Total Climate Controlled	2,148 sq.ft.
Covered Porches	640 sq.ft.
Garage	740 sq.ft.
Total Living Area	3,528 sq.ft.

DESIGN FEATURES FOR THE HENNING OF THE SIGNATURE SERIES  
AT RIVERS EDGE GOLF CLUB & PLANTATION®

OWNER'S RETREAT

- Spacious walk-in closets for abundant wardrobe storage
- Comfort height water closet
- Shower with ceramic tile walls and glass door enclosure
- Cultured marble double bowl vanity with mirror
- Moen® "Eva" or "Brantford" chrome faucets

GOURMET KITCHEN

- Cooking and entertainment island
- Granite countertops with under-mount stainless steel double sink
- Cabinetry with raised wood panel doors and crown molding (maple)
- Superior GE® Stainless Steel appliances with self-cleaning range, 25.3 cu ft refrigerator, garbage disposal, microwave, and dishwasher
- "Camerist" Moen® chrome faucet

INTERIOR FEATURES

- Professional interior design coordinator
- Classic trim details including oversized baseboards throughout, large window and door casings, and decorative crown molding in the great room, foyer, dining room, kitchen, powder room, and bedrooms
- Smooth finish 9' ceilings
- Sherwin Williams® paint
- "Plymouth" Schlage® door hardware in brushed chrome

- Hardwood flooring in great room, dining room, breakfast room, gourmet kitchen, foyer, and powder room
- Ceramic tile flooring in baths and laundry room
- Plush Mohawk® carpeting in remaining areas of residence
- Cozy fireplace including gas logs, wooden mantle, slate hearth, and built-in cabinetry

ARCHITECTURAL AND EXTERIOR FEATURES

- Innovative Architectural design
- Low maintenance hardiplank siding with intricate boxing and trim, per exterior elevation
- Pilings foundation with brick detail
- Architectural 30 year shingles and pre-finished metal per exterior elevation
- Landscaping with sod and automatic irrigation system
- Conceptual Architectural design approval
- Amarr® "Classica" steel garage doors

GREEN ENERGY & SAFETY FEATURES

- Efficient Low-E insulated double pane vinyl windows with screens
- Energy efficient heating and cooling system with digital thermostats
- Durable Therma-True® or Plastpro® insulated front door
- Ceiling fans in family room and owner's retreat
- Full six year structural warranty provided



2000 Arnold Palmer Drive • Charlotte, NC 28470 • www.riversedge-nc.com • 800.789.0535

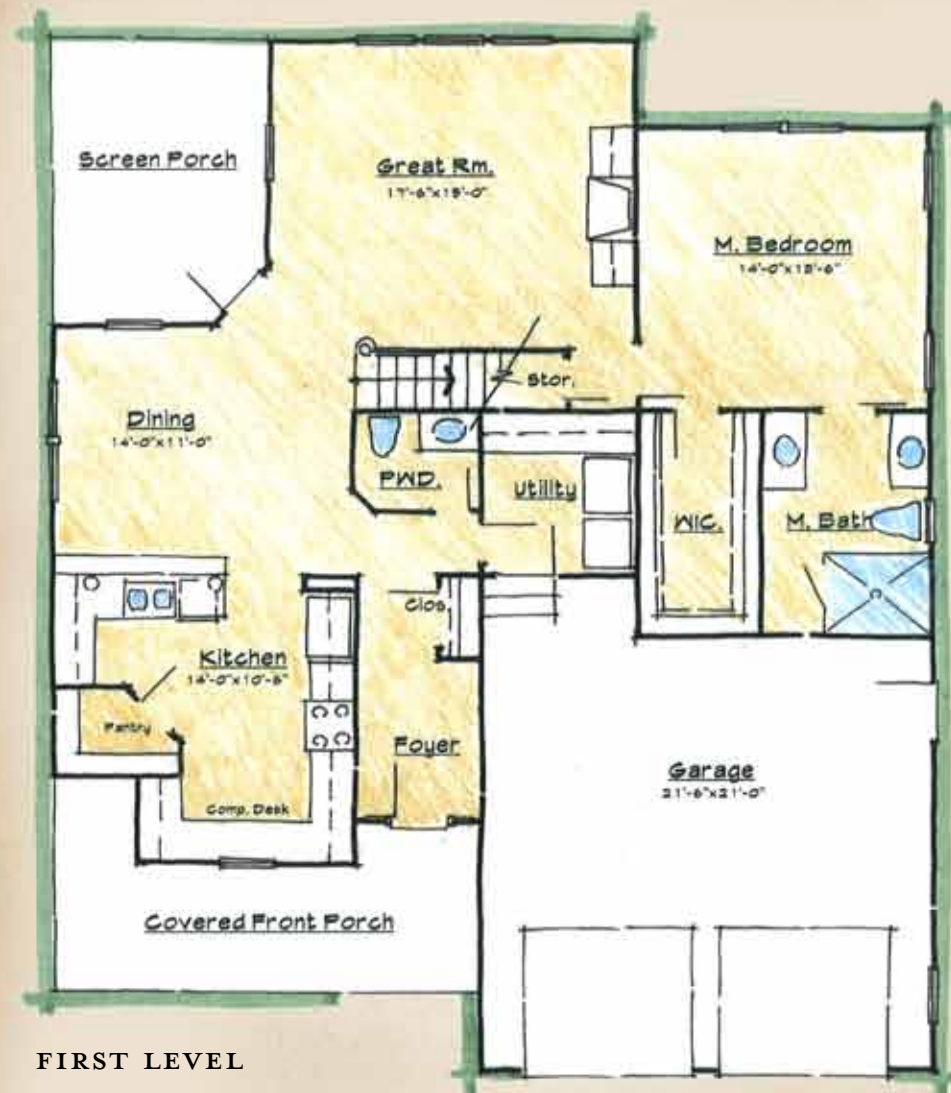


Obtain the Property Report required by Federal law from the Broker-in-Charge at Rivers Edge Golf Club & Plantation LLC and read it before signing anything. No Federal agency has judged the merits or value, if any, of this property. Not a valid offering in any state where registration is required but not yet complete. All provisions of the master plan are subject to change, revision, or deletion by the Developer at its sole discretion, at any time, without notice. Changes and modifications to plans, materials, and specifications may be made without notice. Dimensions and square footages are approximate. Artistic renderings and other images are for illustration purposes only and do not represent a specific home on a platted site plan as defined in the Master Declaration of Covenants and Easements and Architectural Design Guidelines. Home and customer specific detailed drawings and specifications will be furnished to each customer as part of their Construction Agreement. This drawing represents an instrument of service for the exclusive use of Rivers Edge Golf Club & Plantation® and affiliated agents. Reproduction, redistribution, or use of this document without express written permission of the copyright owner is strictly prohibited by law. Copyright © 2010 Rivers Edge Golf Club & Plantation®. Rivers Edge Golf Club & Plantation® and Mark Saunders Luxury Homes® are registered trademarks of The Coastal Companies®. Third party trademarks are used with implied permission and remain the property of their owner.



Illustrative elevations may be shown with optional features.





FIRST LEVEL



SECOND LEVEL

THE MIDDLECOFF AT RIVERS EDGE	
3 Bedrooms and 2 1/2 Baths	
Total Climate Controlled (excludes finished multipurpose room)	2,208 sq. ft.
Covered Porches	284 sq. ft.
Garage	472 sq. ft.
Total Living Area	2,964 sq. ft.
*Optional Multipurpose Room	294 sq. ft.



## THE MIDDLECOFF

The beauty of the Middlecoff home is in its architecturally innovative exterior design, beautifully crafted with front entrance carriage door style garage, wrap-around porch with elegant columns, decorative overhangs, and a well balanced roofline including a decorative "Widow's Walk" and centralized dormer. Inside, the home flourishes with great ideas like the convenience of a built-in computer desk in the kitchen and a walk-in pantry for ample storage space. A screen porch centered between the dining and great rooms is a perfect spot for entertaining and can be open year-round in the temperate North Carolina climate. The owner's retreat completes the first level living environment and two nicely appointed guest rooms with adjoining bathroom are located on the second level of the Middlecoff, allowing plenty of room for family and friends.

The Signature Series starts with our plan, but becomes your home design. These homes offer extraordinary value, quality construction and the detail that all Mark Saunders Luxury Homes are known for. All designs and floor plans in the series have been pre-approved for construction in Rivers Edge and offer a substantial list of custom possibilities to assist you in creating your dream home. The Signature Series is superior craftsmanship, lasting value, architectural innovation, beautiful designs and attention to detail in your home at an affordable price.

2000 Arnold Palmer Drive, Shallotte, NC 28470  
800.789.0535 • realestate@riversedge-nc.com



Artistic illustration of the front elevation and floor plan are conceptual and subject to change. Dimensions and square footage calculations are taken from the construction plan blueprints. Any unauthorized use or duplication of The Middlecoff 1a-2208 is a violation of copyright law. Copyright © 2010 Mark Saunders Luxury Homes®. \*Room over the garage is optionally finished.

DESIGN FEATURES FOR THE MIDDLECOFF OF THE SIGNATURE SERIES  
AT RIVERS EDGE GOLF CLUB & PLANTATION®

OWNER'S RETREAT

- Spacious walk-in closets for abundant wardrobe storage
- Comfort height water closet
- Shower with ceramic tile walls and glass door enclosure
- Cultured marble double bowl vanity with mirror
- Moen® "Eva" or "Brantford" chrome faucets

GOURMET KITCHEN

- Granite countertops with under-mount stainless steel double sink
- Cabinetry with raised wood panel doors and crown molding (maple)
- Superior GE® Stainless Steele appliances with self-cleaning range, 25.3 cu ft refrigerator, garbage disposal, microwave, and dishwasher
- "Camerist" Moen® chrome faucet

INTERIOR FEATURES

- Professional interior design coordinator
- Classic trim details including oversized baseboards throughout, large window and door casings, and decorative crown molding in the great room, foyer, dining room, kitchen, powder room, and bedrooms
- Smooth finish 9' ceilings
- Sherwin Williams® paint
- "Plymouth" Schlage® door hardware in brushed chrome
- Hardwood flooring in great room, dining room, breakfast room, gourmet kitchen, foyer, and powder room

- Ceramic tile flooring in baths and laundry room
- Plush Mohawk® carpeting in remaining areas of residence
- Cozy fireplace including gas logs, wooden mantle, slate hearth, and built-in cabinetry

ARCHITECTURAL AND EXTERIOR FEATURES

- Innovative Architectural design
- Raised concrete foundation with oversized tumbled brick finish
- Low maintenance hardiplank siding with intricate boxing and trim, per exterior elevation
- Architectural 30 year shingles and pre-finished metal per exterior elevation
- Landscaping with sod and automatic irrigation system
- Conceptual Architectural design approval
- Amarr "Classica" steel garage doors

GREEN ENERGY & SAFETY FEATURES

- Efficient Low-E insulated double pane vinyl windows with screens
- Energy efficient heating and cooling system with digital thermostats
- Durable Therma-True or Plastpro insulated front door
- Ceiling fans in family room and owner's retreat
- Full six year structural warranty



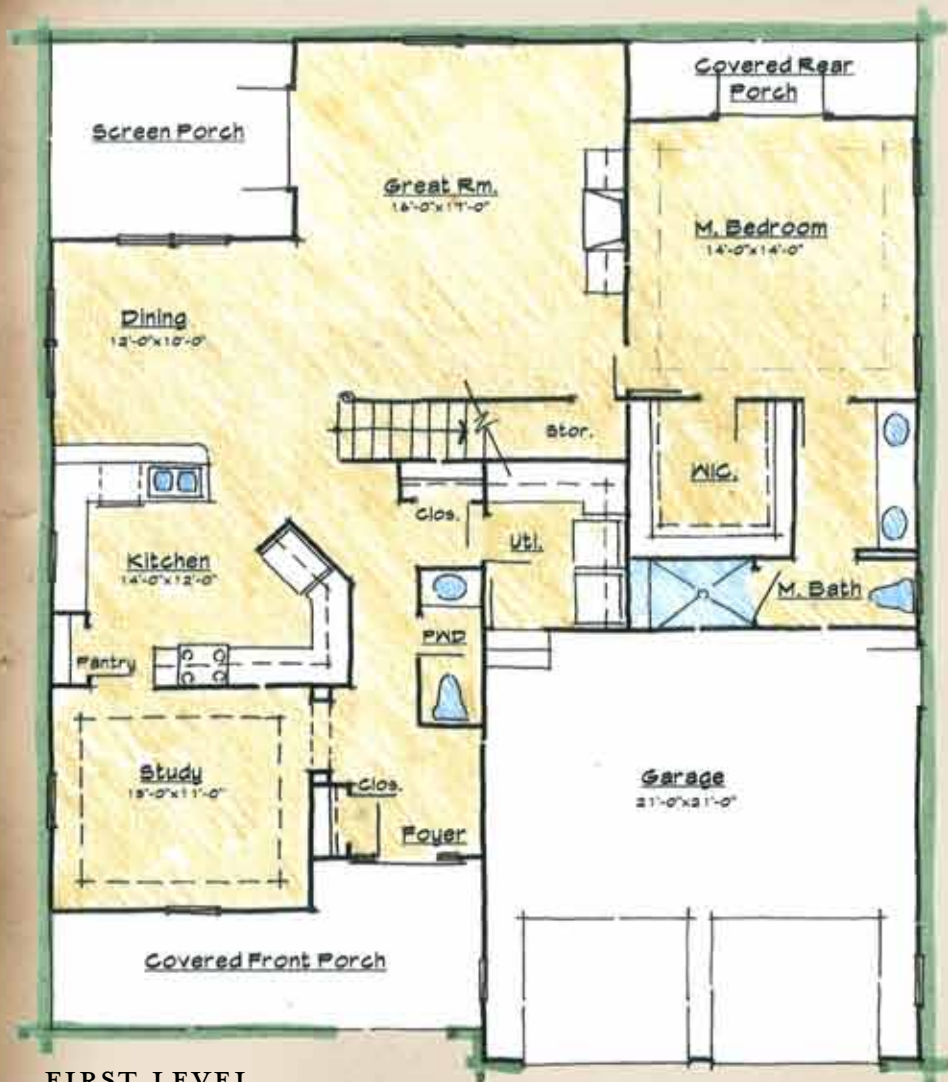
2000 Arnold Palmer Drive · Charlotte, NC 28470 · www.riversedge-nc.com · 800.789.0535



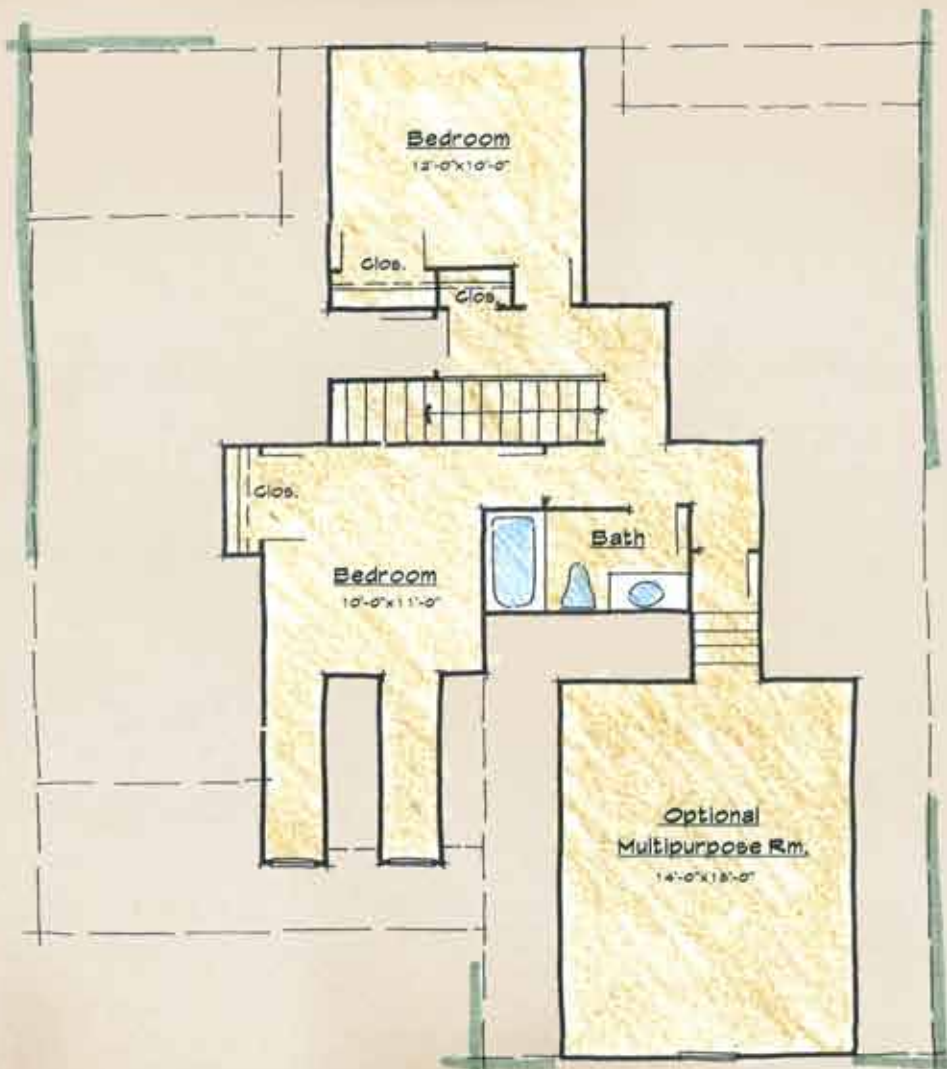
Obtain the Property Report required by Federal law from the Broker-in-Charge at Rivers Edge Golf Club & Plantation LLC and read it before signing anything. No Federal agency has judged the merits or value, if any, of this property. Not a valid offering in any state where registration is required but not yet complete. All provisions of the master plan are subject to change, revision, or deletion by the Developer at its sole discretion, at any time, without notice. Changes and modifications to plans, materials, and specifications may be made without notice. Dimensions and square footages are approximate. Artistic renderings and other images are for illustration purposes only and do not represent a specific home on a platted site plan as defined in the Master Declaration of Covenants and Easements and Architectural Design Guidelines. Home and customer specific detailed drawings and specifications will be furnished to each customer as part of their Construction Agreement. This drawing represents an instrument of service for the exclusive use of Rivers Edge Golf Club & Plantation® and affiliated agents. Reproduction, redistribution, or use of this document without express written permission of the copyright owner is strictly prohibited by law. Copyright © 2010 Rivers Edge Golf Club & Plantation®. Rivers Edge Golf Club & Plantation® and Mark Saunders Luxury Homes® are registered trademarks of The Coastal Companies®. Third party trademarks are used with implied permission and remain the property of their owner.



Illustrative elevations may be shown with optional features.



FIRST LEVEL



SECOND LEVEL

THE ROSBURG AT RIVERS EDGE	
3 Bedrooms, plus study, and 2 ½ Baths	
Total Climate Controlled (excludes finished multipurpose room)	1,739 sq.ft.
Covered Porches	318 sq.ft.
Garage	441 sq.ft.
Total Living Area	2,498 sq.ft.
*Optional Multipurpose Room	267 sq.ft.



## THE ROSBURG

The Rosburg is a simple, yet elegantly refined design with beautifully detailed dormers, ample windows, and a two car front entrance garage. Inside is an open living environment including 3 bedrooms and 2 ½ baths, making good use of every square foot. This home features two living levels with guest suites on the second level, promoting a feeling of comfort and spaciousness. The owner's retreat showcases a spacious bedroom, upscale bathroom, and private porch for rest and relaxation.

The Signature Series starts with our plan, but becomes your home design. These homes offer extraordinary value, quality construction and the detail that all Mark Saunders Luxury Homes are known for. All designs and floor plans in the series have been pre-approved for construction in Rivers Edge and offer a substantial list of custom possibilities to assist you in creating your dream home. The Signature Series is superior craftsmanship, lasting value, architectural innovation, beautiful designs and attention to detail in your home at an affordable price.

2000 Arnold Palmer Drive, Shallotte, NC 28470  
800.789.0535 • realestate@riversedge-nc.com



Artistic illustration of the front elevation and floor plan are conceptual and subject to change. Dimensions and square footage calculations are taken from the construction plan blueprints. Any unauthorized use or duplication of The Rosburg 1a-1739 is a violation of copyright law. Copyright © 2010 Mark Saunders Luxury Homes®. \*Room over the garage is optionally finished.

DESIGN FEATURES FOR THE ROSBURG OF THE SIGNATURE SERIES  
AT RIVERS EDGE GOLF CLUB & PLANTATION®

OWNER'S RETREAT

- Spacious walk-in closet for abundant wardrobe storage
- Comfort height water closet
- Shower with ceramic tile walls and glass door enclosure
- Cultured marble double bowl vanity with mirror
- Moen® "Eva" or "Brantford" chrome faucets

GOURMET KITCHEN

- Granite countertops with under-mount stainless steel double sink
- Cabinetry with raised wood panel doors and crown molding (maple)
- Superior GE® Stainless Steel appliances with self-cleaning range, 25.3 cu ft refrigerator, garbage disposal, microwave, and dishwasher
- "Camerist" Moen® chrome faucet

INTERIOR FEATURES

- Professional interior design coordinator
- Classic trim details including oversized baseboards throughout, large window and door casings, and decorative crown molding in the great room, foyer, dining room, kitchen, powder room, and bedrooms
- Smooth finish 9' ceilings
- Sherwin Williams® paint
- "Plymouth" Schlage® door hardware in brushed chrome
- Hardwood flooring in great room, dining room, breakfast room, gourmet kitchen, foyer, and powder room

- Ceramic tile flooring in baths and laundry room
- Plush Mohawk® carpeting in remaining areas of residence
- Cozy fireplace including gas logs, wooden mantle, slate hearth, and built-in cabinetry
- 

ARCHITECTURAL AND EXTERIOR FEATURES

- Innovative Architectural design
- Raised concrete foundation with oversized tumbled brick finish
- Low maintenance hardiplank siding with intricate boxing and trim, per exterior elevation
- Architectural 30 year shingles and pre-finished metal per exterior elevation
- Landscaping with sod and automatic irrigation system
- Conceptual Architectural design approval
- Amarr® "Classica" steel garage doors
- 

GREEN ENERGY & SAFETY FEATURES

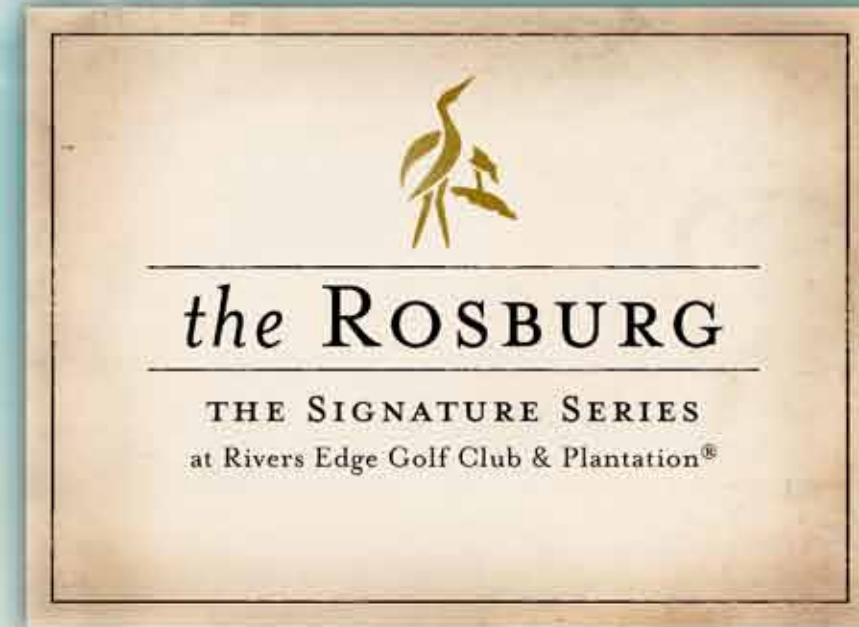
- Efficient Low-E insulated double pane vinyl windows with screens
- Energy efficient heating and cooling system with digital thermostats
- Durable Therma-True or Plastpro insulated front door
- Ceiling fans in family room and owner's retreat
- Full six year structural warranty



2000 Arnold Palmer Drive • Shallotte, NC 28470 • www.riversedge-nc.com • 800.789.0535



Obtain the Property Report required by Federal law from the Broker-in-Charge at Rivers Edge Golf Club & Plantation LLC and read it before signing anything. No Federal agency has judged the merits or value, if any, of this property. Not a valid offering in any state where registration is required but not yet complete. All provisions of the master plan are subject to change, revision, or deletion by the Developer at its sole discretion, at any time, without notice. Changes and modifications to plans, materials, and specifications may be made without notice. Dimensions and square footages are approximate. Artistic renderings and other images are for illustration purposes only and do not represent a specific home on a platted site plan as defined in the Master Declaration of Covenants and Easements and Architectural Design Guidelines. Home and customer specific detailed drawings and specifications will be furnished to each customer as part of their Construction Agreement. This drawing represents an instrument of service for the exclusive use of Rivers Edge Golf Club & Plantation® and affiliated agents. Reproduction, redistribution, or use of this document without express written permission of the copyright owner is strictly prohibited by law. Copyright © 2010 Rivers Edge Golf Club & Plantation®. Rivers Edge Golf Club & Plantation® and Mark Saunders Luxury Homes® are registered trademarks of The Coastal Companies®. Third party trademarks are used with implied permission and remain the property of their owner.



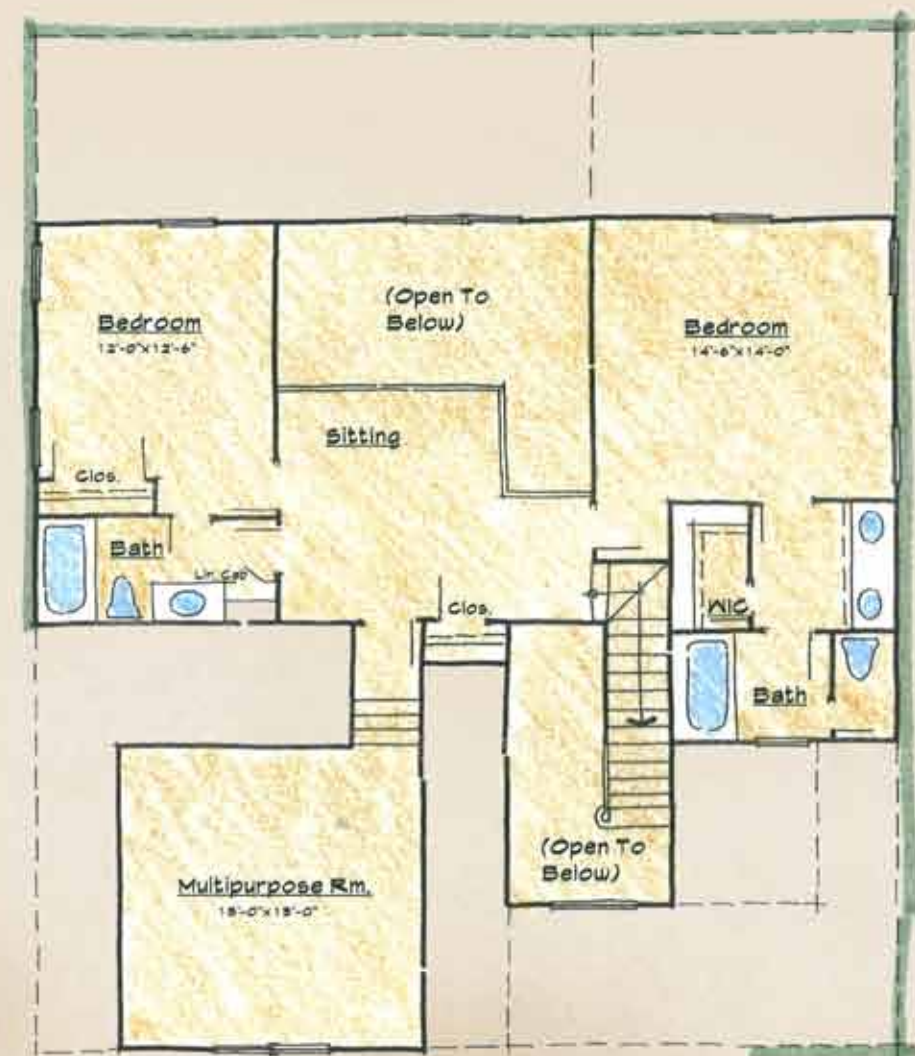
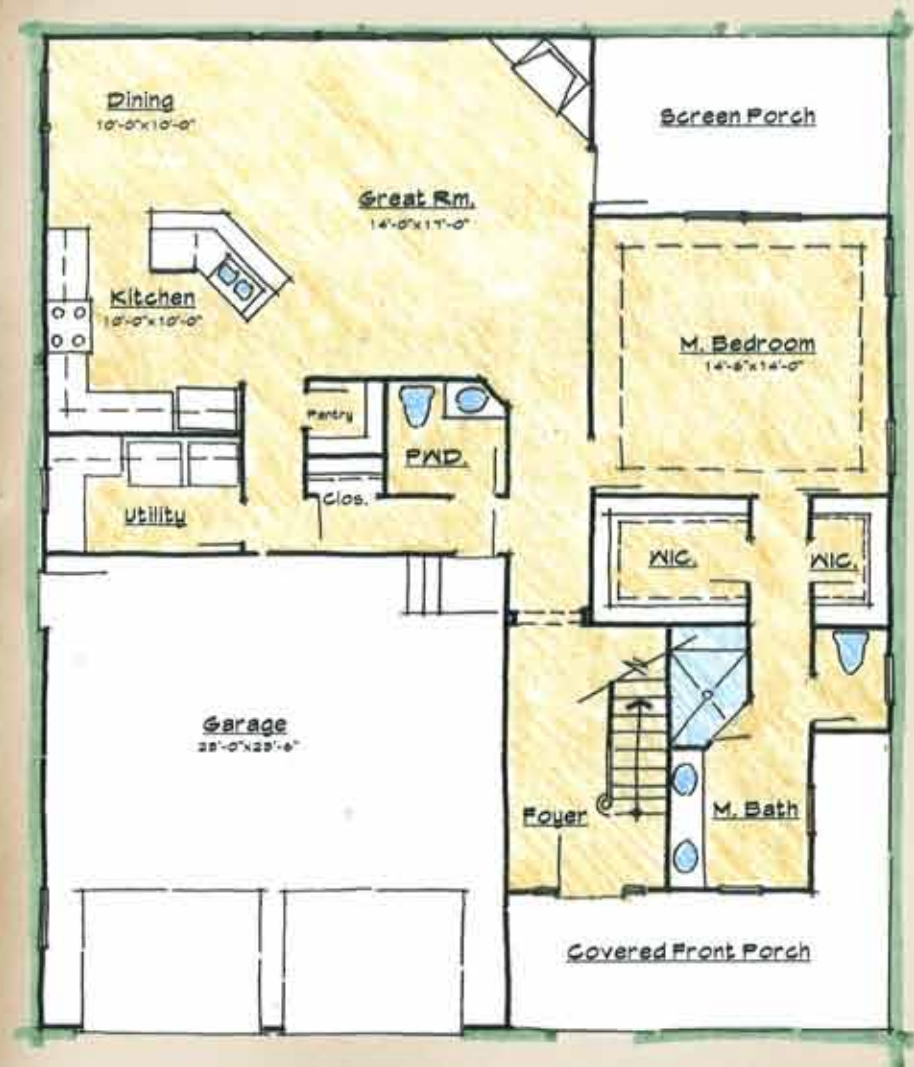
Illustrative elevations may be shown with optional features.

## THE SNEAD

The Snead at Rivers Edge is an exceptional home, perfect for experiencing life along the Carolina coast. This distinctive design with beautiful curb appeal will be built to last utilizing architectural innovation and exceptional carpentry work. Step through the porch into an elegant foyer, then on to the heart of the home, an open great room, dining space, and expansive kitchen. An owner's retreat is large and includes two walk-in closets, a nicely appointed master bath, and spacious bedroom. On the second level of the home, two guest rooms are arranged to maximize privacy each with a private bath and a multipurpose room provides ample space for a home office, game or fitness room.

The Signature Series starts with our plan, but becomes your home design. These homes offer extraordinary value, quality construction and the detail that all Mark Saunders Luxury Homes are known for. All designs and floor plans in the series have been pre-approved for construction in Rivers Edge and offer a substantial list of custom possibilities to assist you in creating your dream home. The Signature Series is superior craftsmanship, lasting value, architectural innovation, beautiful designs and attention to detail in your home at an affordable price.

2000 Arnold Palmer Drive, Shallotte, NC 28470  
800.789.0535 • realestate@riversedge-nc.com



THE SNEAD AT RIVERS EDGE	
3 Bedrooms and 3 1/2 Baths	
Total Climate Controlled (excludes finished multipurpose room)	2,026 sq.ft.
Covered Porches	300 sq.ft.
Garage	540 sq.ft.
Total Living Area	2,866 sq.ft.
*Optional Multipurpose Room	238 sq.ft.

DESIGN FEATURES FOR THE SNEAD OF THE SIGNATURE SERIES  
AT RIVERS EDGE GOLF CLUB & PLANTATION®

OWNER'S RETREAT

- Spacious walk-in closet for abundant wardrobe storage
- Comfort height water closet
- Shower with ceramic tile walls and glass door enclosure
- Cultured marble double bowl vanity with mirror
- Moen® "Eva" or "Brantford" chrome faucets

GOURMET KITCHEN

- Cooking and entertainment island
- Granite countertops with under-mount stainless steel double sink
- Cabinetry with raised wood panel doors and crown molding (maple)
- Superior GE® Stainless Steel appliances with self-cleaning range, 25.3 cu ft refrigerator, garbage disposal, microwave, and dishwasher
- "Camerist" Moen® chrome faucet

INTERIOR FEATURES

- Professional interior design coordinator
- Classic trim details including oversized baseboards throughout, large window and door casings, and decorative crown molding in the great room, foyer, dining room, kitchen, powder room, and bedrooms
- Smooth finish 9' ceilings
- Sherwin Williams® paint
- "Plymouth" Schlage® door hardware in brushed chrome
- Hardwood flooring in great room, dining room, breakfast room, gourmet kitchen, foyer, and powder room

- Ceramic tile flooring in baths and laundry room
- Plush Mohawk® carpeting in remaining areas of residence
- Cozy fireplace including gas logs, wooden mantle, slate hearth, and built-in cabinetry

ARCHITECTURAL AND EXTERIOR FEATURES

- Innovative Architectural design
- Raised concrete foundation with oversized tumbled brick finish
- Low maintenance hardiplank siding with intricate boxing and trim, per exterior elevation
- Architectural 30 year shingles and pre-finished metal per exterior elevation
- Landscaping with sod and automatic irrigation system
- Conceptual Architectural design approval
- Amarr® "Classica" steel garage doors

GREEN ENERGY & SAFETY FEATURES

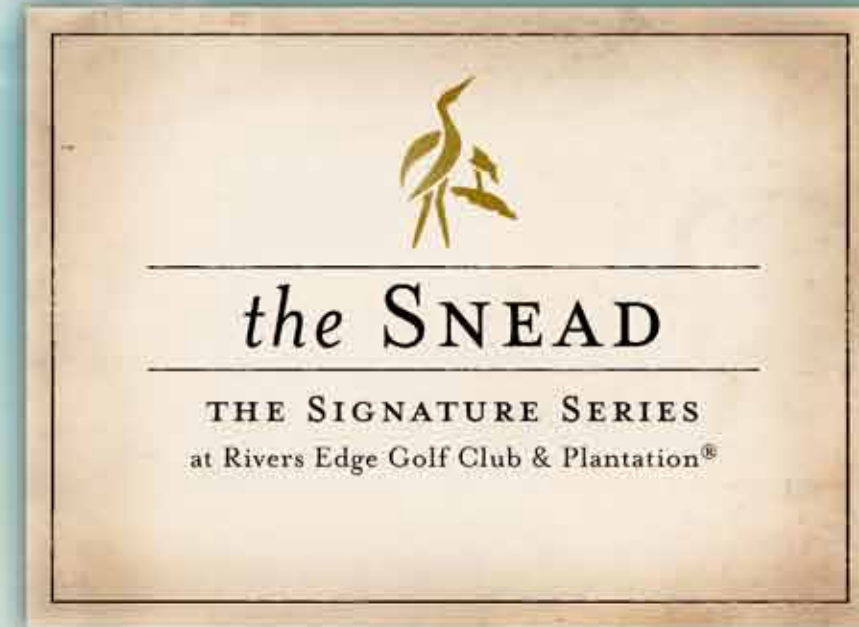
- Efficient Low-E insulated double pane vinyl windows with screens
- Energy efficient heating and cooling system with digital thermostats
- Durable Therma-True or Plastpro insulated front door
- Ceiling fans in family room and owner's retreat
- Full six year structural warranty



2000 Arnold Palmer Drive • Shallotte, NC 28470 • www.riversedge-nc.com • 800.789.0535



Obtain the Property Report required by Federal law from the Broker-in-Charge at Rivers Edge Golf Club & Plantation LLC and read it before signing anything. No Federal agency has judged the merits or value, if any, of this property. Not a valid offering in any state where registration is required but not yet complete. All provisions of the master plan are subject to change, revision, or deletion by the Developer at its sole discretion, at any time, without notice. Changes and modifications to plans, materials, and specifications may be made without notice. Dimensions and square footages are approximate. Artistic renderings and other images are for illustration purposes only and do not represent a specific home on a platted site plan as defined in the Master Declaration of Covenants and Easements and Architectural Design Guidelines. Home and customer specific detailed drawings and specifications will be furnished to each customer as part of their Construction Agreement. This drawing represents an instrument of service for the exclusive use of Rivers Edge Golf Club & Plantation® and affiliated agents. Reproduction, redistribution, or use of this document without express written permission of the copyright owner is strictly prohibited by law. Copyright © 2010 Rivers Edge Golf Club & Plantation®. Rivers Edge Golf Club & Plantation® and Mark Saunders Luxury Homes® are registered trademarks of The Coastal Companies®. Third party trademarks are used with implied permission and remain the property of their owner.



Illustrative elevations may be shown with optional features.